

Thank you for purchasing this quality product. Be sure to check all packing material carefully for small parts that may have come loose inside the carton during shipment.

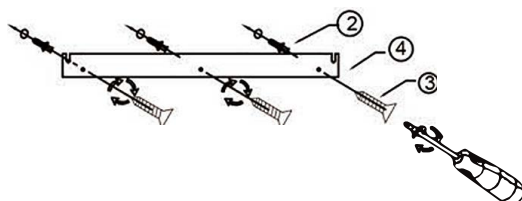
#### Step 1

Use a power drill to bore three holes which is line up with the hole of Z-bar in the wall .



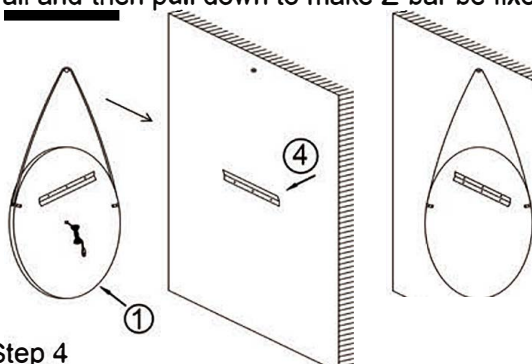
#### Step 2

Fasten the Z-bar( 4 ) onto wall with 3pcs screws ( 3 ) Anchor ( 2 ) and screw driver.



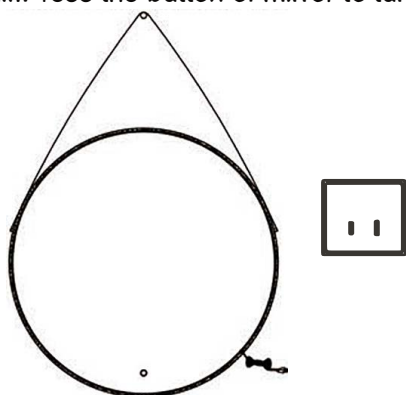
#### Step 3

Attach the Z-bar on mirror to the Z-bar on the wall and then pull down to make Z-bar be fixed firmly.



#### Step 4

Put the plug of mirror into the outlet on the wall. Press the button of mirror to turn it on/off



#### TOOL REQUIRED (NOT PROVIDED)



Screw driver



power drill

#### PARTS LIST

NO	Description	Sketch	Q'ty
	Aurora Hanging LED Mirror, 36" Round		1 pc



#### Hardware List

NO	Description	Sketch	Q'ty
2	Anchor-30mm		3 pcs
3	Screw-Ø4x30mm		3 pcs
4	Z-bar-540mm		1 pc



#### Grounding Instructions

This product must be grounded. If it should malfunction or breakdown, grounding provides a path of least resistance for electric current to reduce the risk of electric shock. This product is equipped with a cord having an equipment-grounding conductor and a grounding plug. The plug must be plugged into an appropriate outlet that is properly installed and grounded in accordance with all local codes and ordinances. This product is for use on a 120V circuit and has a grounding plug that looks like the plug in the following figure. Make sure that the product is connected to an outlet having the same configuration as the plug. No adapter should be used with this product.

