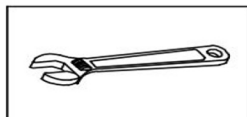
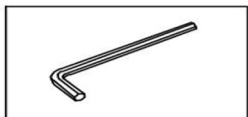


Clock Installation

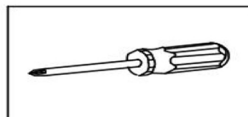
Tools You Will Need: Tools You May Need



Adjustable wrench



Hexagon wrench



Philips Screwdriver

Before the Installation

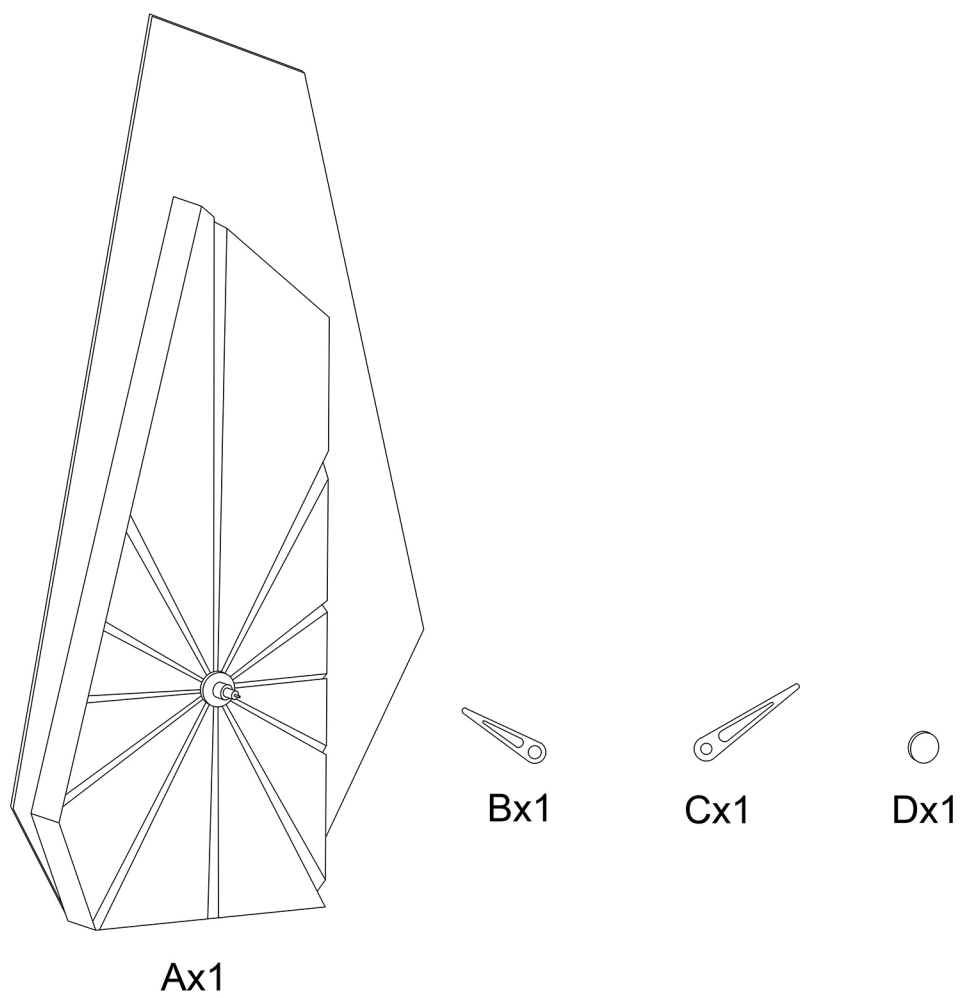
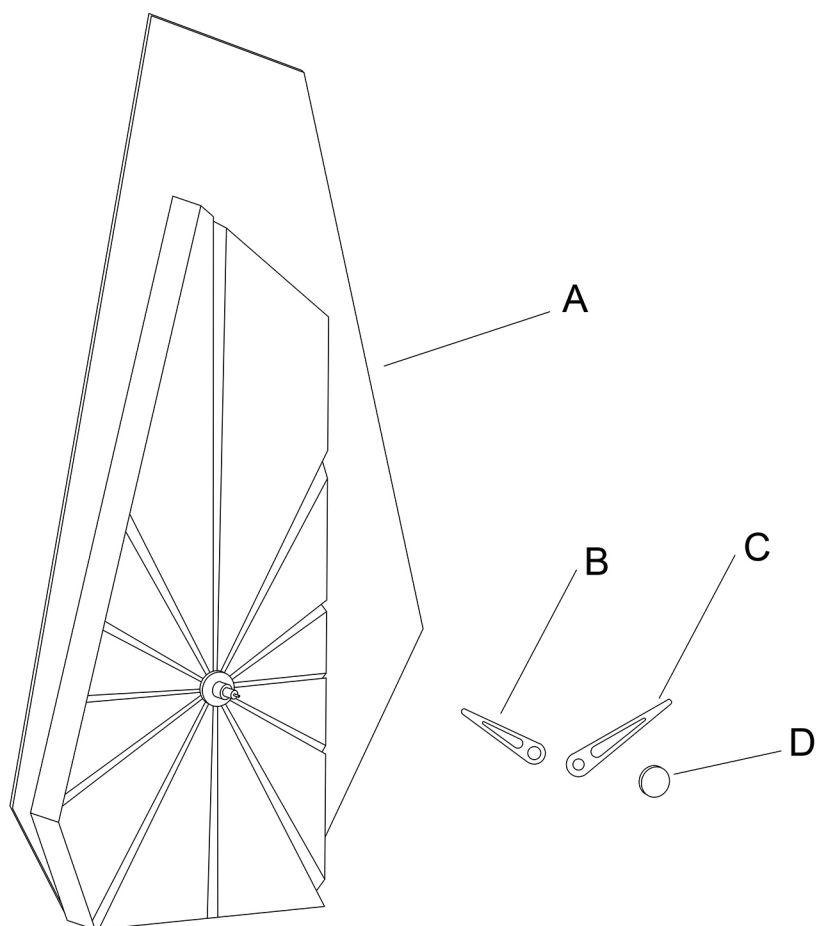
1. Do not throw away packing materials until assembly is complete for small parts may come loose inside the carton during shipment. If parts are missing, please contact us.
2. Assemble this item on a soft surface, such as carpet to protect the finish.
3. Proper assembly of this item requires 2 people.
4. Periodically check to ensure that all connections are tight.
5. It is recommended that installation of the product be done by a qualified licensed furniture assembler.

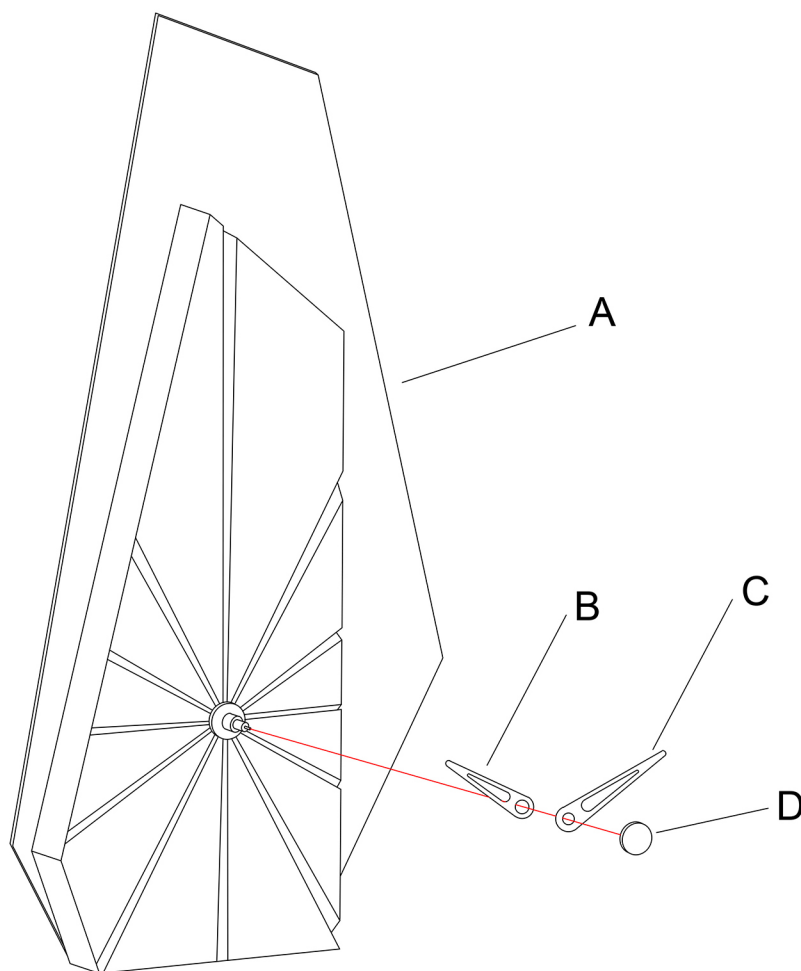
Care and Cleaning

1. To protect the finish, avoid use chemicals and household cleaners.
2. All hot serving dishes should be placed on a pad.
3. Any liquid spilled onto the top should be cleaned up immediately with a damp cloth.

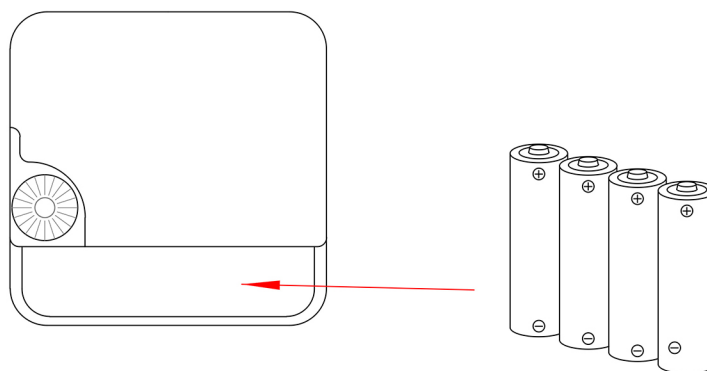
Parts List

P.2/4



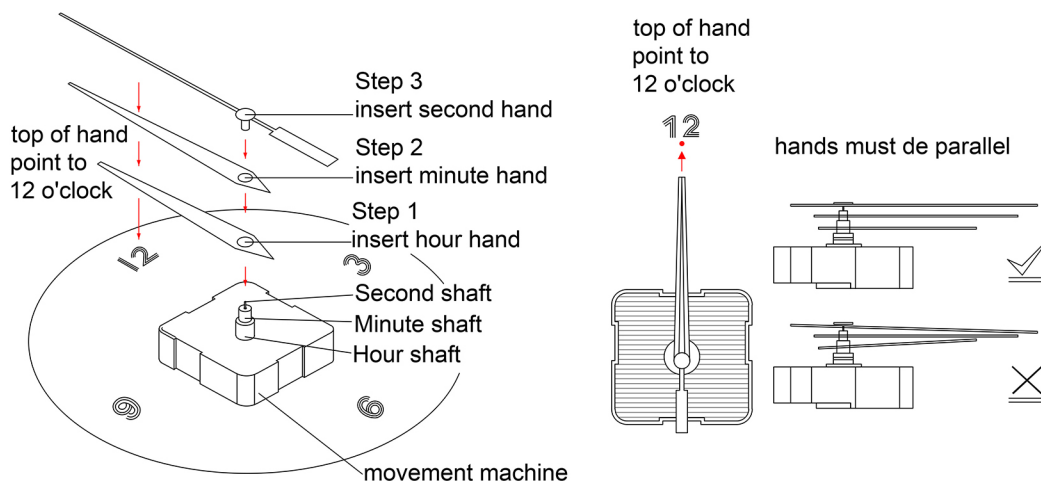


Step 2



Wall clock installation:

1. Battery selection, model: AA cell/battery, general size: diameter: 14mm, height: 49mm; Please use carbon dry battery (R6P), alkaline battery (LR6) or rechargeable battery is not recommended.
2. When unpacking and taking out the wall clock, do not directly turn the clock face upside down to the ground or the desktop, because it is easy to press the pointer to deform and damage the movement. Please check whether the pointers are deformed: there is no deformation or crossing between the pointers, which can follow the "-+" direction of the battery slot on the movement, and the battery is in the same direction, as shown in the following figure; Then remove the pointer protective housing, and adjust it to the local time with the movement wheel.



Pointer replacement:

1. Carefully remove the original pointer and prepare a new pointer;
2. First insert the hour hand, with the pointer pointing at 12 o'clock; Then insert the minute hand, with the pointer pointing at 12 o'clock, and finally insert the second hand (except for products without second hand); Gently insert the second hand 1-2mm. Do not press the pointer too hard; As shown in Figure 1 below
3. Each pointer shall be balanced, straight and without crossing
4. If the dial has a mask, the mask cannot contact the second hand.
5. Use the movement wheel to adjust to the local time.

Step 4

ADVICE product maintenance suggestions

·Glass&Ceramic

Wipe with a wet towel or newspaper. In case of stains, wipe them with a towel dipped in beer or warm vinegar. In addition, use the glass cleaner currently sold in the market. Do not use solutions with strong acidity and alkalinity. In winter, the surface of glass and porcelain is easy to frost, so it can be wiped with a cloth dipped in strong salt water or Baijiu, and the effect is very good.

·Metal material

It is recommended to place metal products in a dry place that is not exposed to direct sunlight. Usually, use a dry cloth to wipe the dust. For copper products, do not use wet cloth or clean water, as water will make it easy to oxidize

·Resin material

Use soft towels or feather dusters to clean the dust and other appliances, and gently remove the dust on the surface of resin crafts. Note: Do not use a wet rag to wipe, because it is easy to leave moisture on the surface of this kind of handicraft, which will damage the resin handicraft for a long time.

·Marble material

Wipe regularly with a slightly wet cloth with mild detergent, and then dry and polish with a clean soft cloth. To deal with cosmetics, tea and tobacco stains, you can apply hydrogen peroxide on the surface of marble furniture, stay for two hours, and then wash and dry it. For the oil stain, it can be wiped with alcohol, acetone, wood essence, etc., and then cleaned and dried.