

Wall Clock

General Guidelines

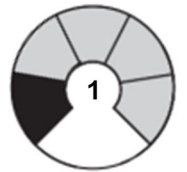
- Do not throw away packing materials until assembly is complete for small parts may come loose inside the carton during shipment. If parts are missing, please contact us.
- Assemble this item on a soft surface, such as carpet to protect the finish.
- During assembly, keep any small part out of reach of children as they may be fatal if swallowed or inhaled. Keep plastic packing bags out of reach of children to avoid any potential danger, such as suffocation.
- Avoid sharp objects and corrosive chemicals to prevent damage to the product or bodily injury.
- Clean with damp cloth. To protect the finish, avoid use chemicals and household cleaners.



TIME



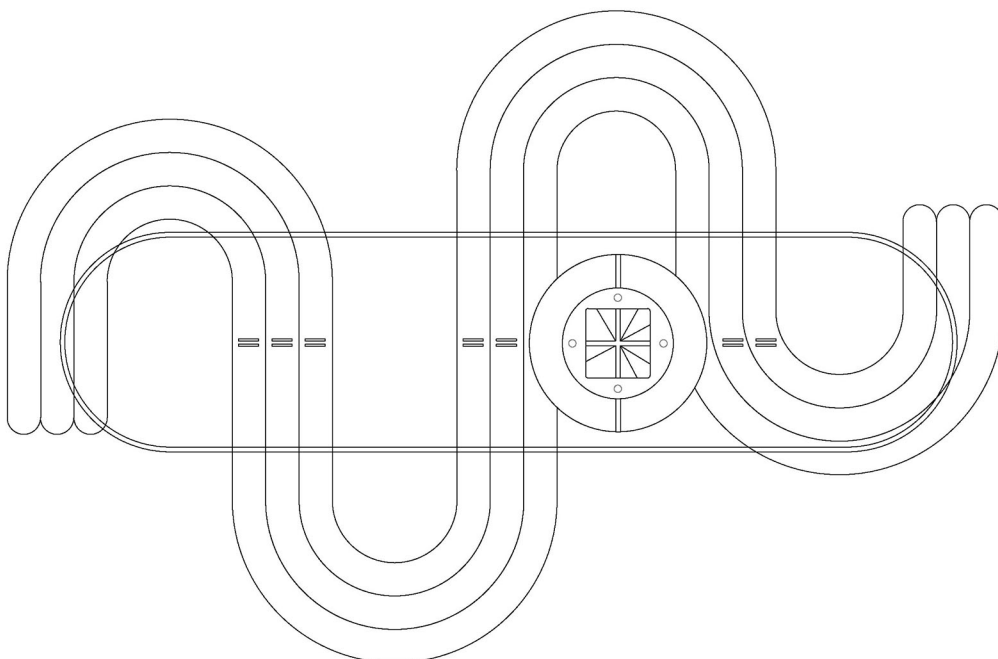
2 People



DIFFICULTY

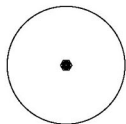
Parts List

Ax1



Accessories List

Bx1



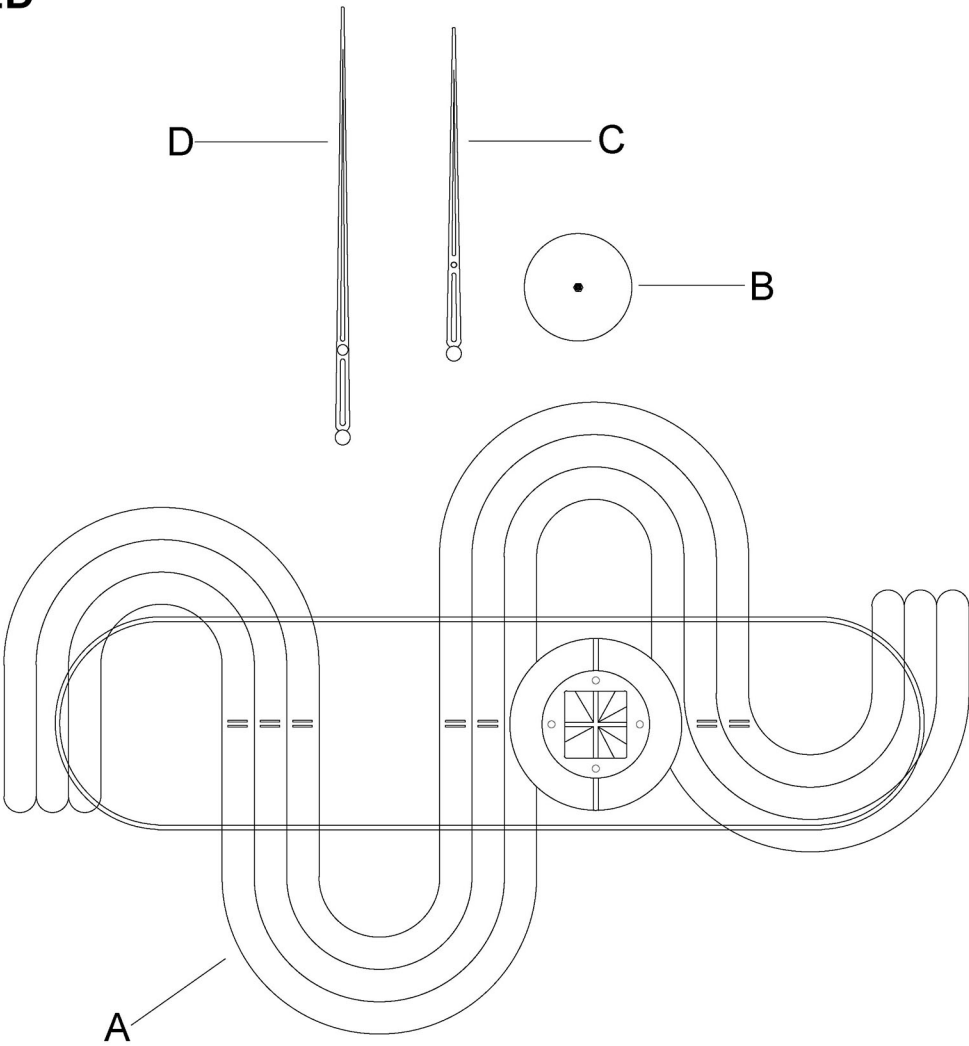
Cx1



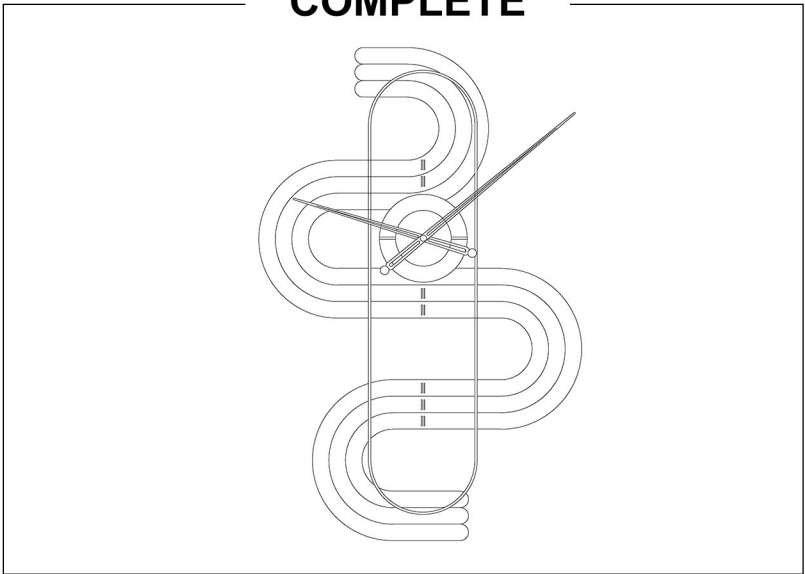
Dx1



EXPLODED



COMPLETE

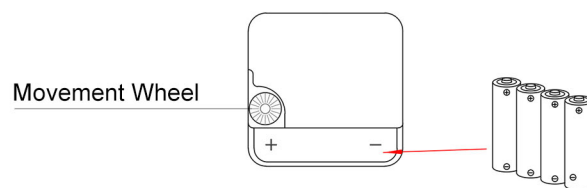


Installation Steps

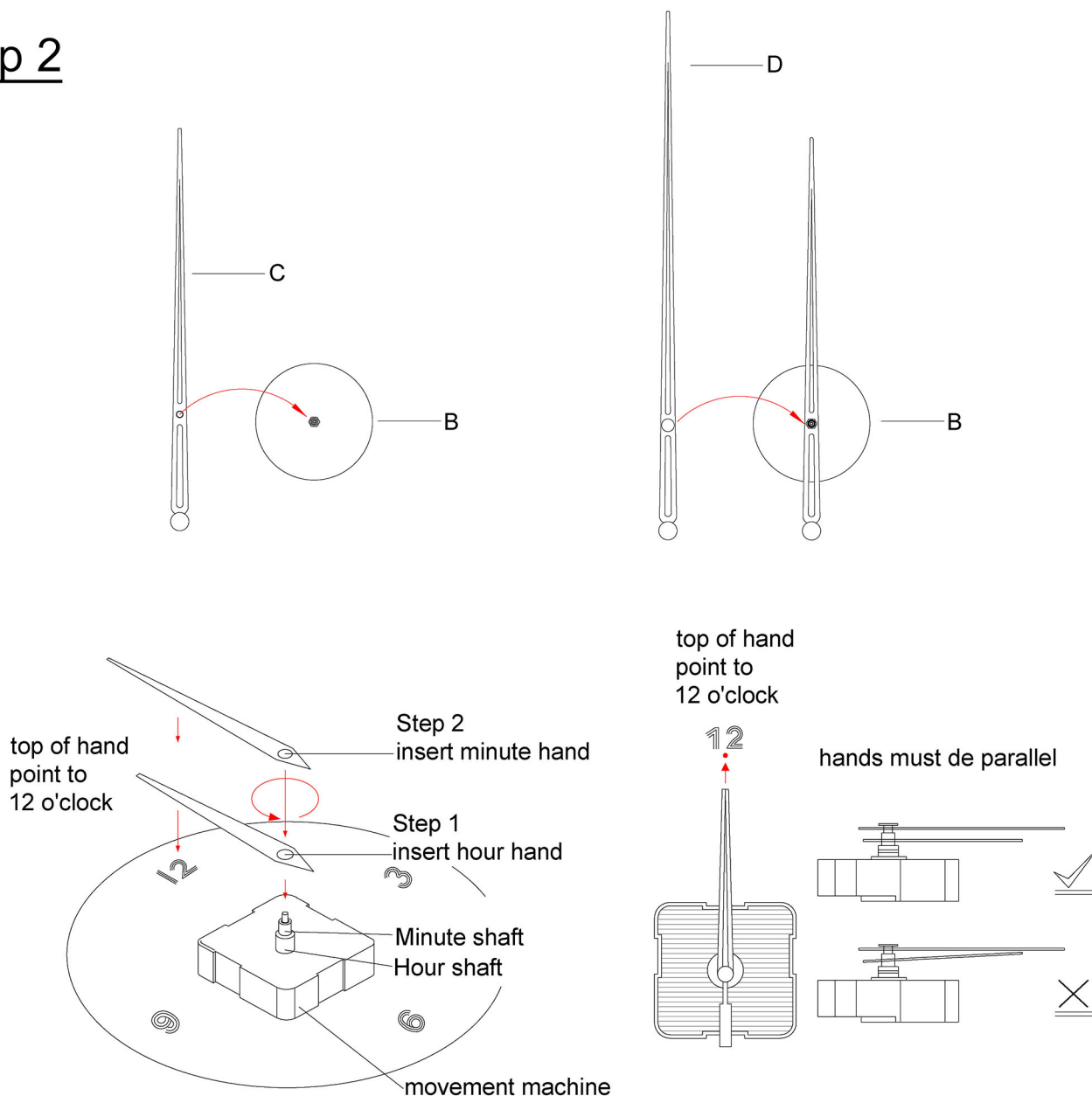
Step 1

Battery Installation:

1. Battery selection: AA cell/battery (general size: diameter 14mm, height 49mm). Please use carbon dry battery (R6P). Alkaline battery (LR6) or rechargeable battery is not allowed.
2. When unpacking and taking out the clock, do not directly buckle the clock front upside down on the ground or table, as it is easy to the deform pointer and damage the movement. Please check whether the pointer is deformed: it can be used normally without deformation or crossing. Place the battery according to the "- +" direction of the battery slot on the back, as shown in the figure below. Last, remove the pointer protective cover, and adjust it to the local time with the movement wheel.

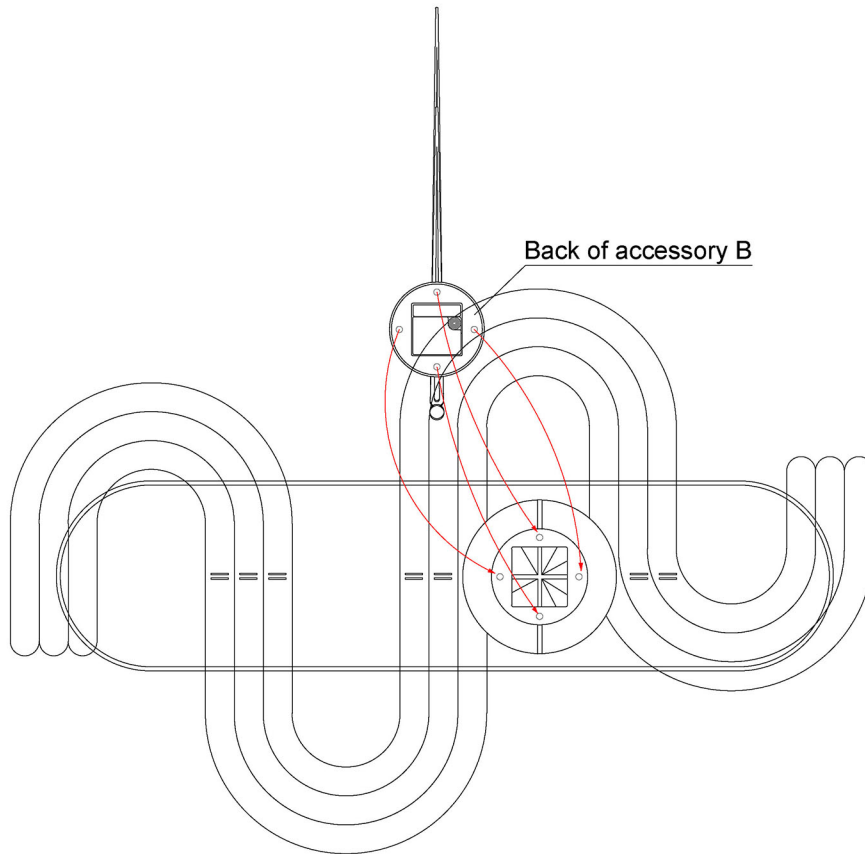


Step 2



Installation Steps

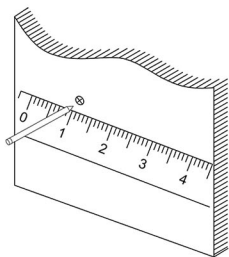
Step 3



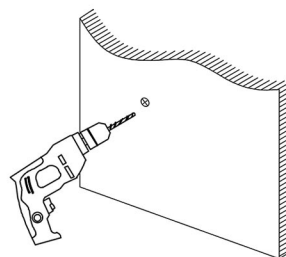
Attach clock to the base as above picture shows

Step 4

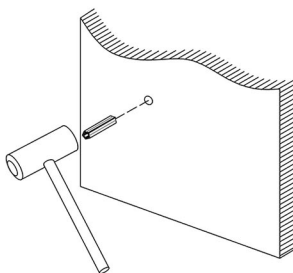
Wall Clock Installation:



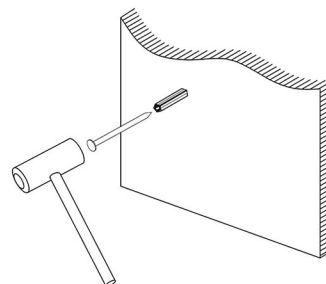
Step 1: Mark the hole position on the wall with a pen.



Step 2: Punch holes at the marked positions with an electric drill, the depth of which is the length of the expanded rubber cap.



Step 3: Plug the expansion rubber cap into the hole.



Step 4: Nail the screw into the expanded rubber cap, with the nail head reserved for 5mm, and hang the product back hook or hanging chain on the screw to finish.