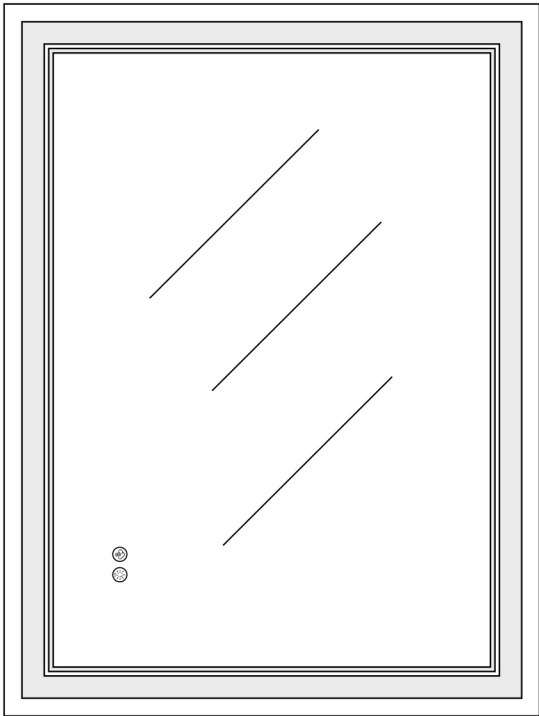
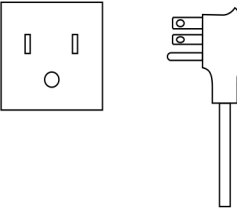
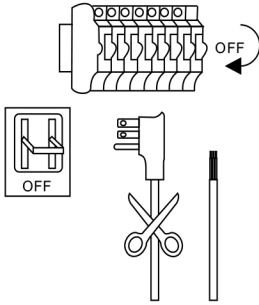
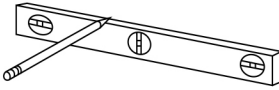
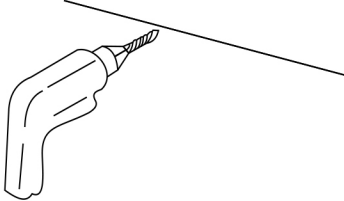
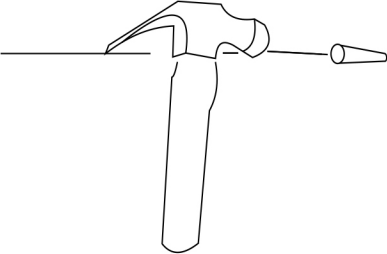
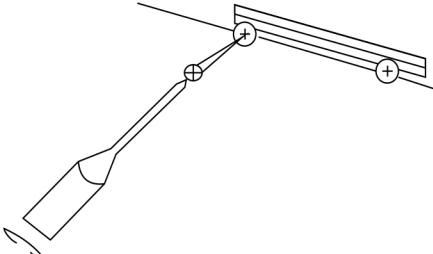
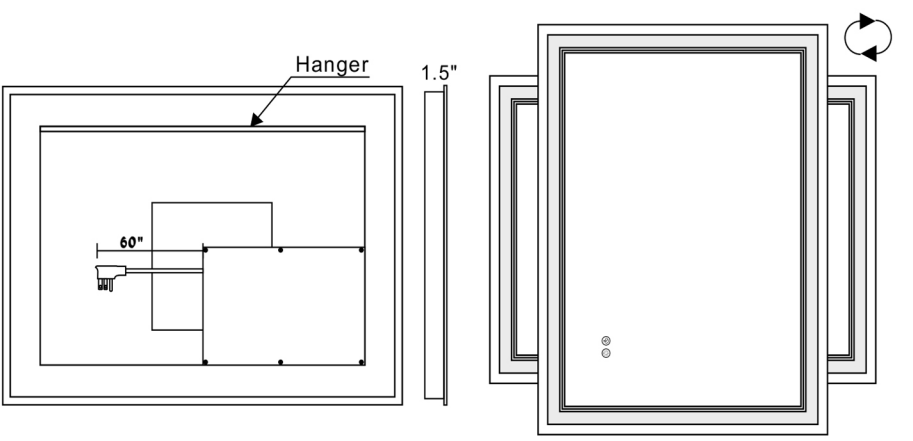
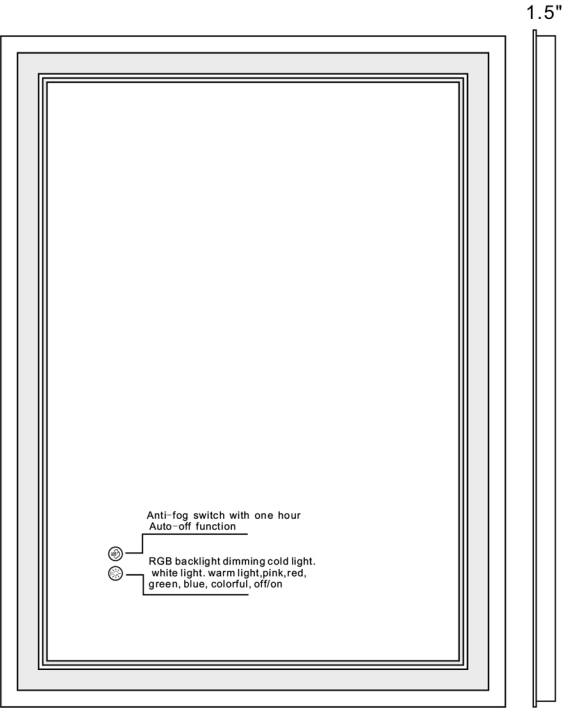
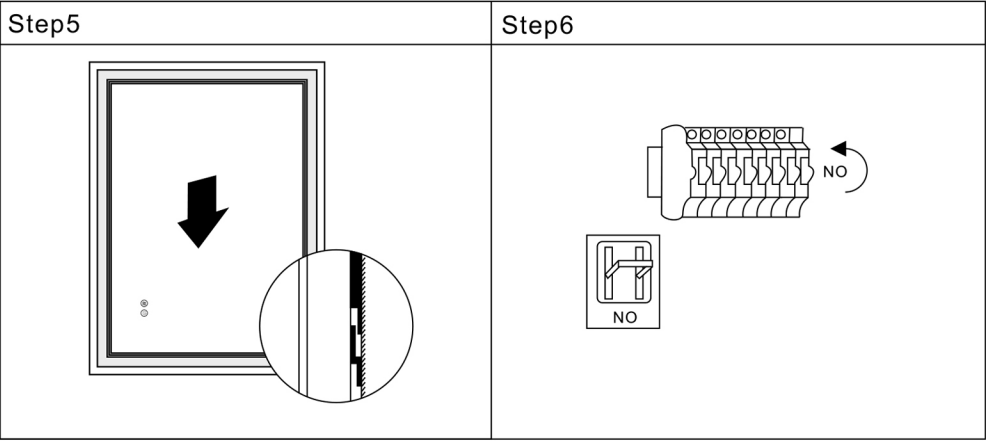


# RGB LED Bathroom Mirror

## Installation Guide & User Manual



Connection method 1	Connection method 2
	
Step1	Step2
 <p>Suggest to use a ruler to draw a straight line, so that the mirror could keep flat.</p>	 <p>According to the number of accessories, drill 2 or 4 holes in the wall.</p>
Step3	Step4
	



can be hung horizontally and vertically

Installation accessories

4"	2PCS		4PCS
----	------	--	------

Technical parameter

Size	Thicknes	Switch	Light strip model	Color temperature	Lumen	CRI	Power(W)	Input voltage (V)	Weight (KG)
24" X32"	1. 5"	2	2835 3colors 192	3000/4000/ 6000	3108	90	44	110V	8. 8

- Tips:
- 1.The accessory is on the hook behind the mirrors.If you don't see it,please look carefully in the package.It must be there.
  - 2.If you have installed but can't get power,please open the power panel and check if the wires arelooes.If yes,you just need to plug the wires tightly.
  - 3.If you have any questions,please contact us in time.