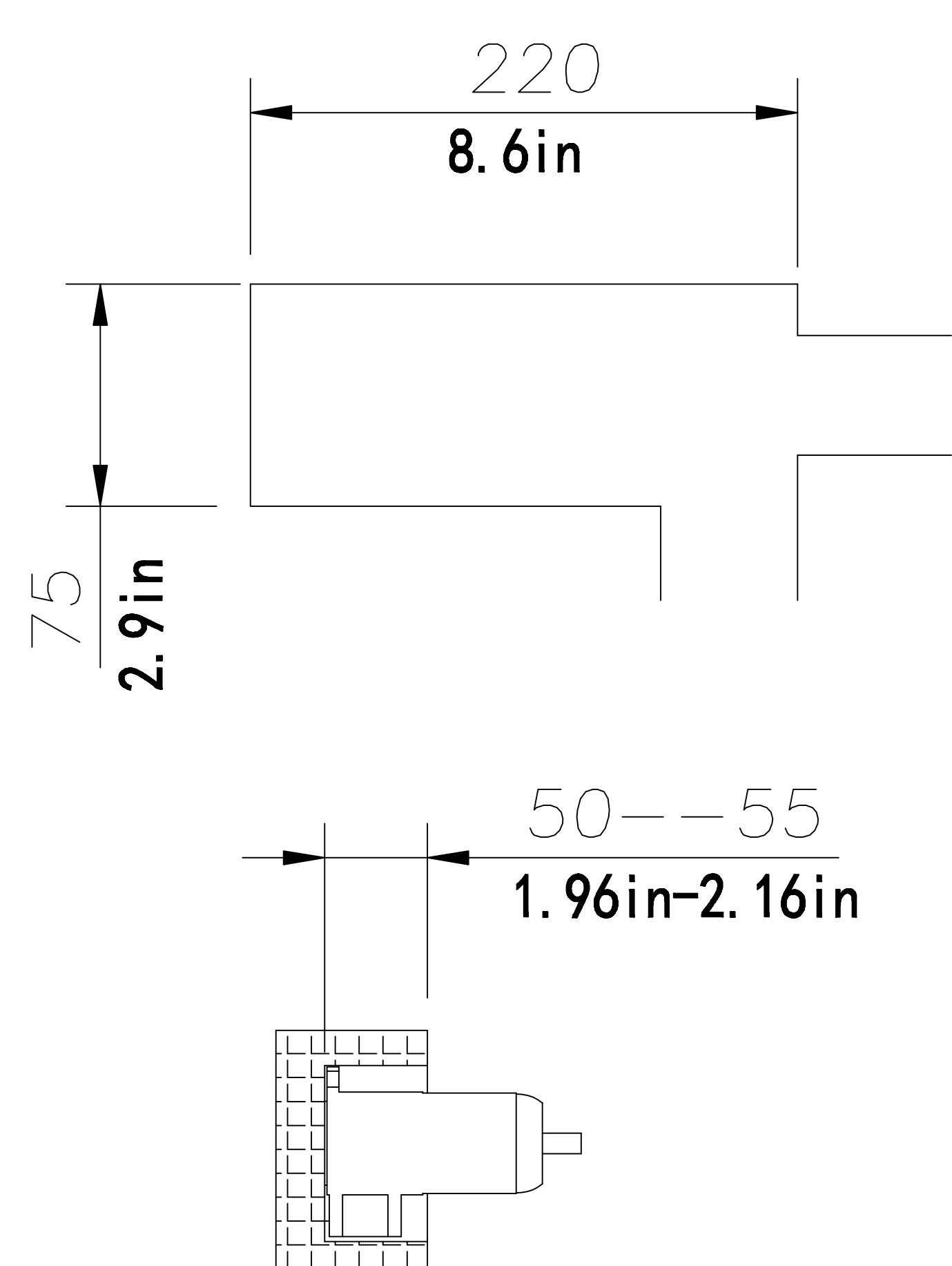
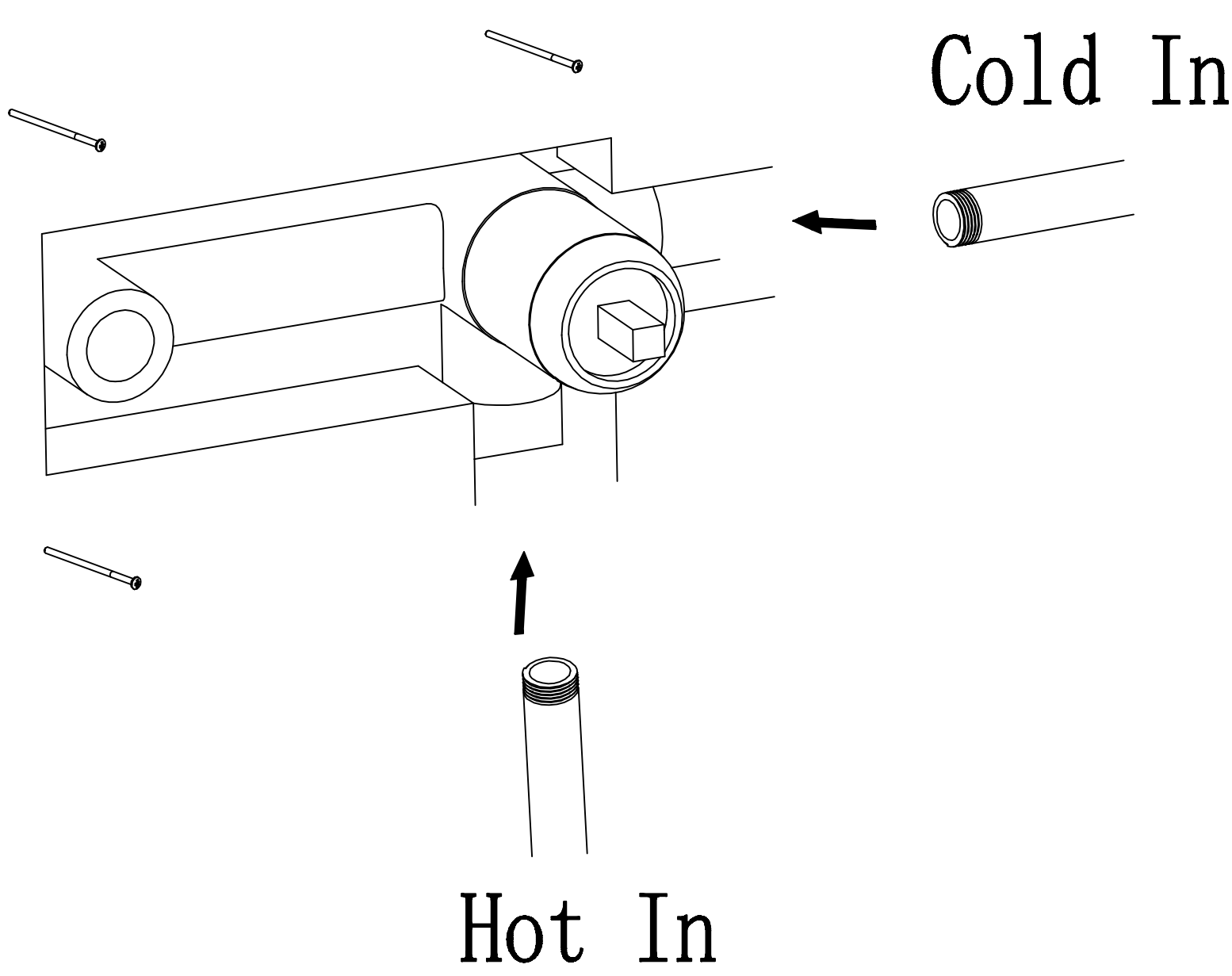


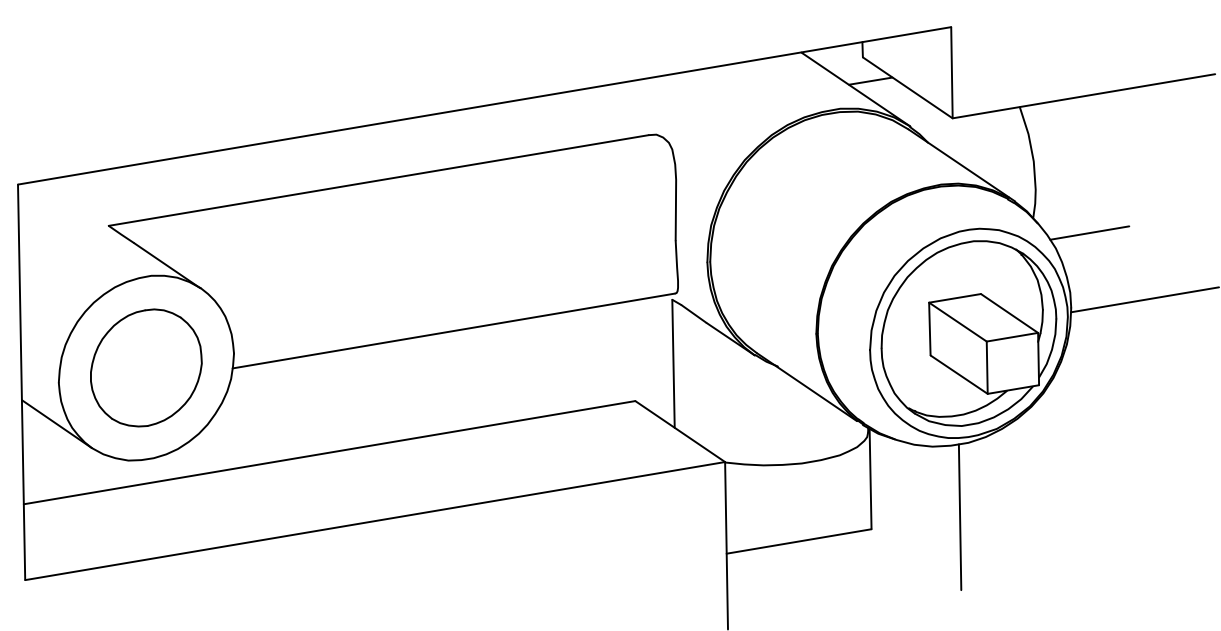
Installation Steps



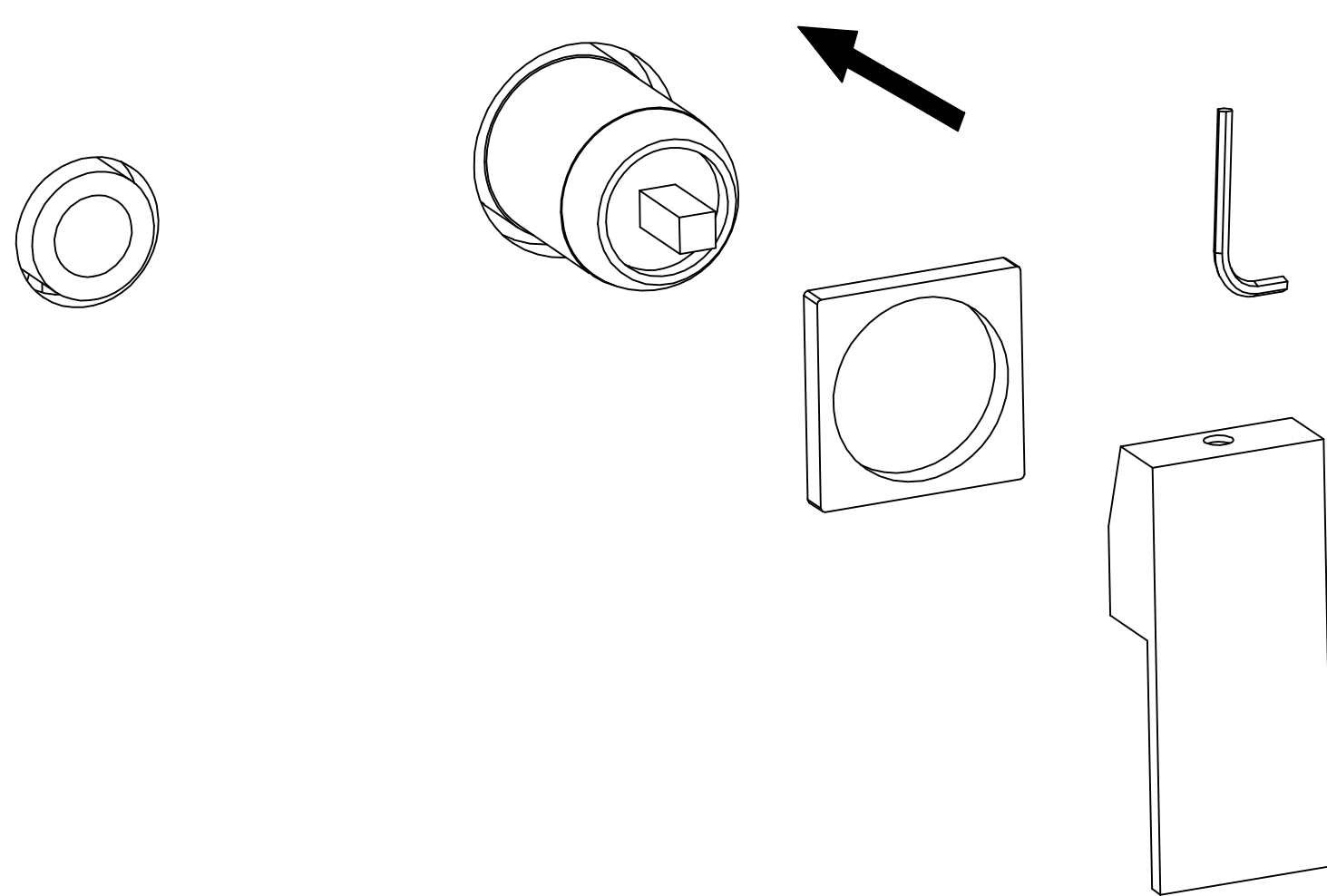
1.The value body excavates hole size.
L220 * H75 * D45-60 mm (L8.6 * H2.9 *
D1.96-2.16 IN)



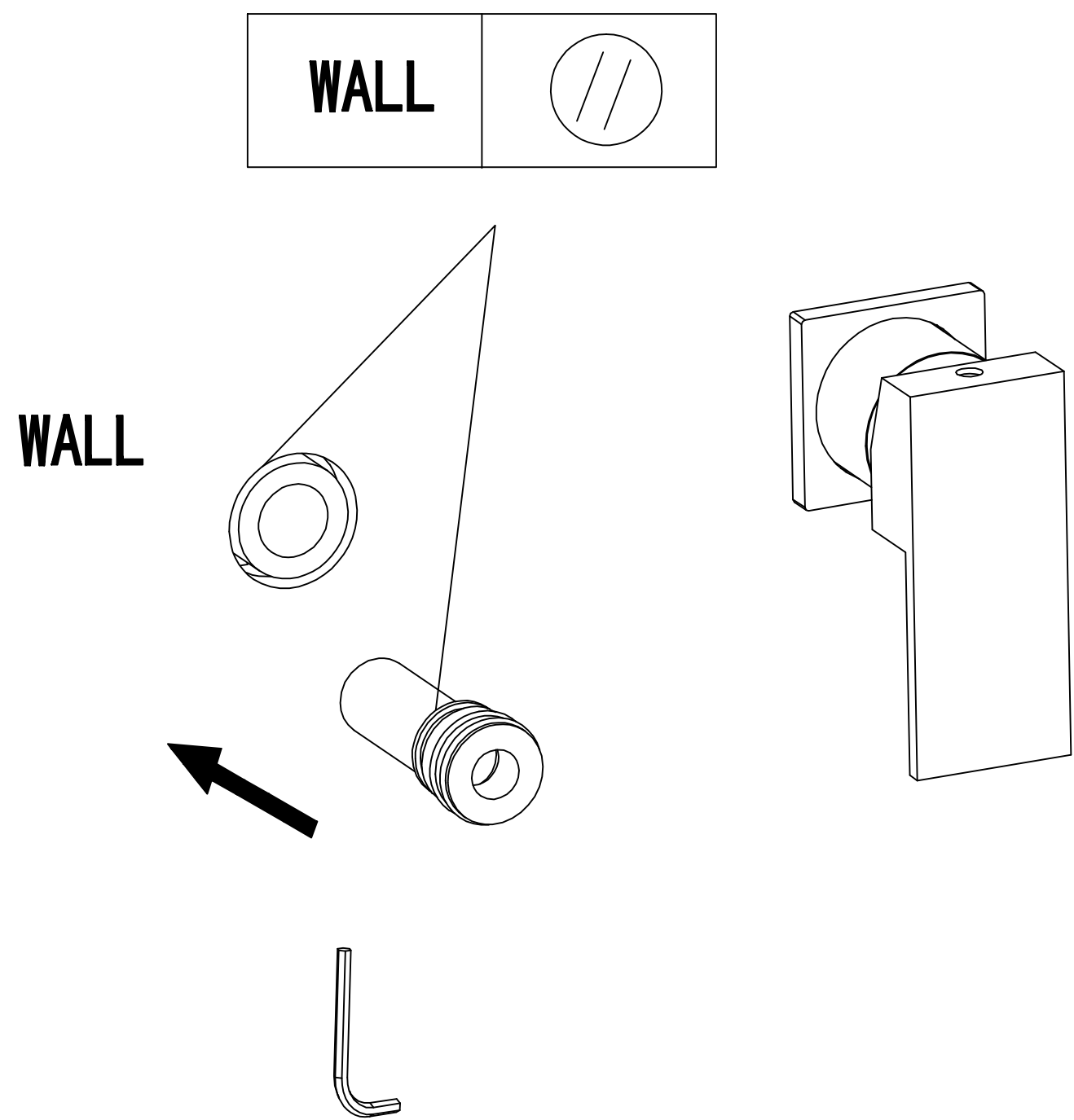
2.Turn off the main switch, adjust the cold and hot
water inlet interface and the upper and lower water
outlet interface, and use screws to fix the value
body in the wall.



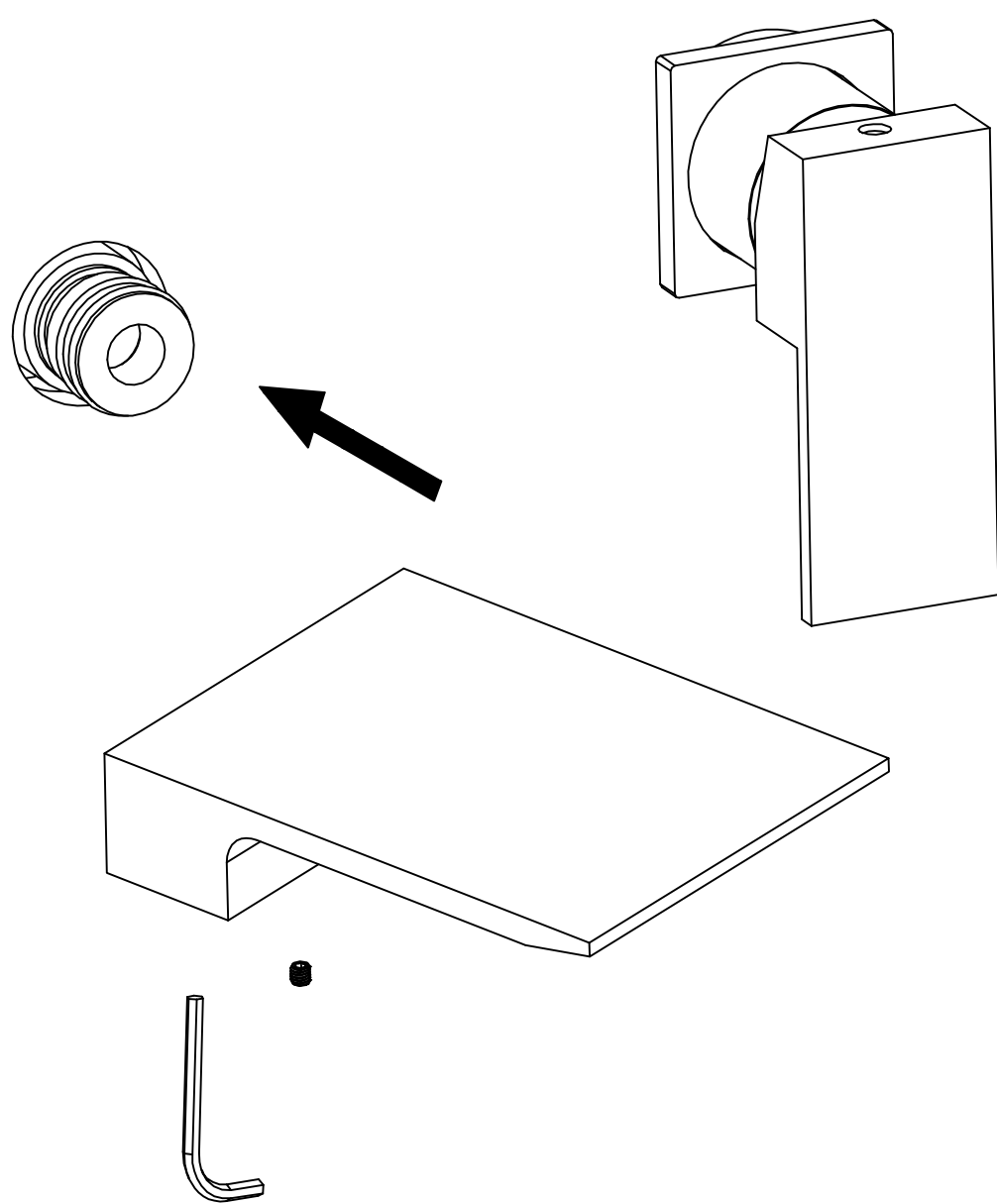
3.The installation in the wall is completed and the
switch is opened for sealing test.



4.Install handle: put two handles on top and lock
with hexagonal wrench.



5.Install the sixthon on the value body .



6.Install the spout part: use the connecting pipe
to connect the left outlet of the value body to
the interface of the spout.