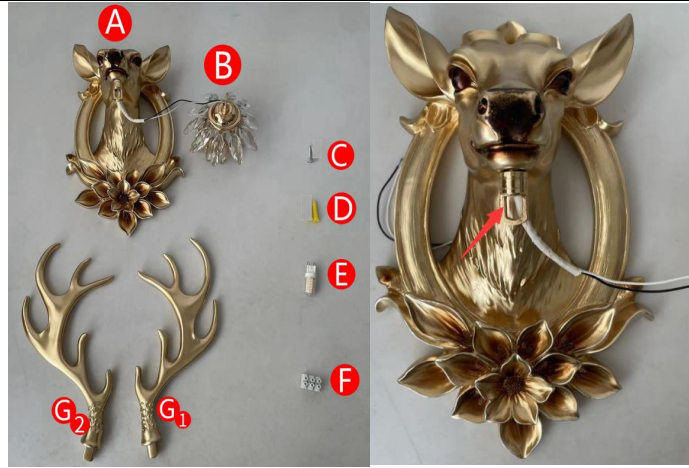


Installation Guide

Picture 1



Check products and accessories: A*1; B:*1; (A & B is semi-pre-installed, avoid the lamp holder line (B) slipping out.) ; C: 30mm*1; D: *1; E *1 (Light source); F*1 (terminal); Installation time: 30min. Number of installations: 1. Installation difficulty: 1

Picture 2



Step 1: Hang B in the position of A and pull out the long wire from the back. (pay attention to avoid collision damage)

Picture 3



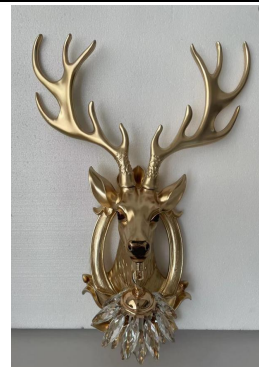
Step 2: Fix the C & D to the wall; Then use F to connect the "L" line, "N" line, and ground lines to the home power supply (pay attention to distinguish the zero line and fire line). Finally, attach A to C.

Picture 4



Step 3: Install light source (E), then power on to test the light.

Picture 5



Step 4: Install G1 & G2 on A.

Picture 6



Complete the installation.