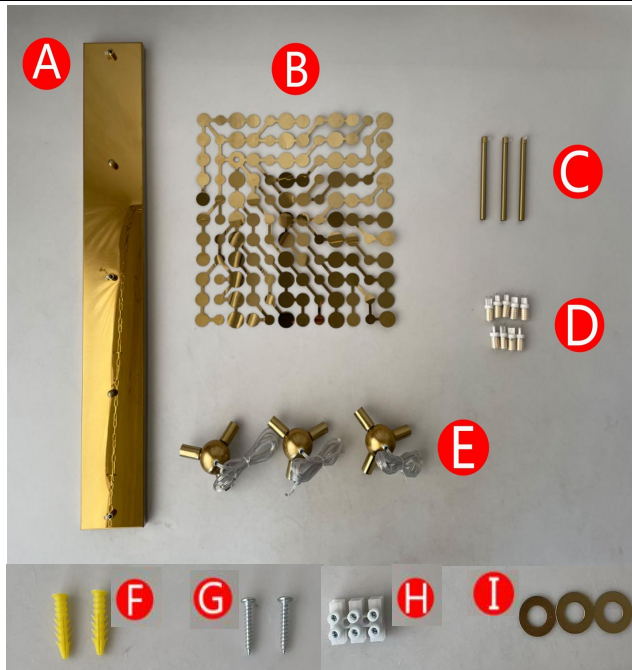


Installation Guide

Picture 1



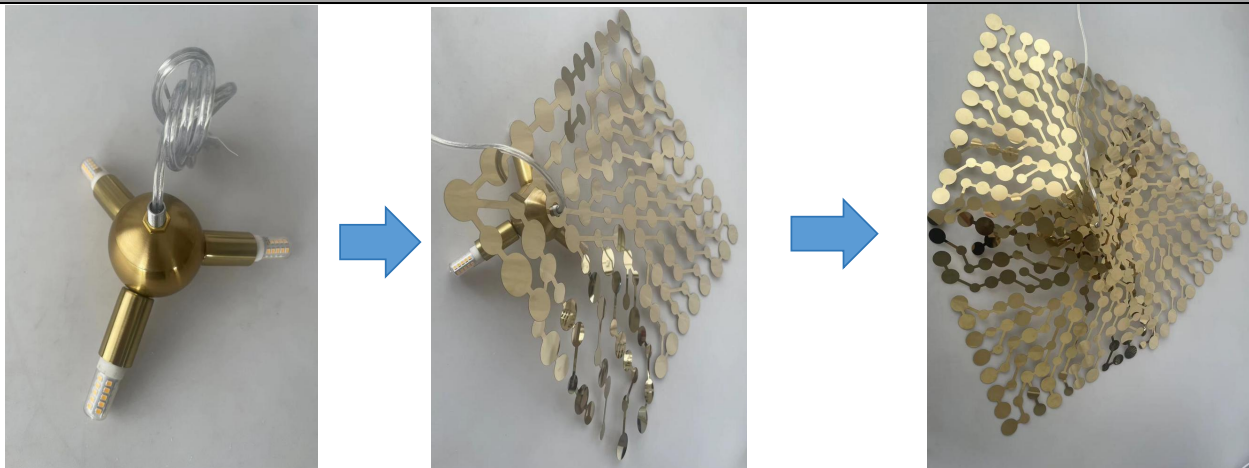
Picture 2



Check products and accessories: A*1; B*9; C*3(160L); D*9; E*3; F*2; G*2(25mm); H*1; I*3; Installation time: 50min.
Number of installations: 1. Installation difficulty: 1

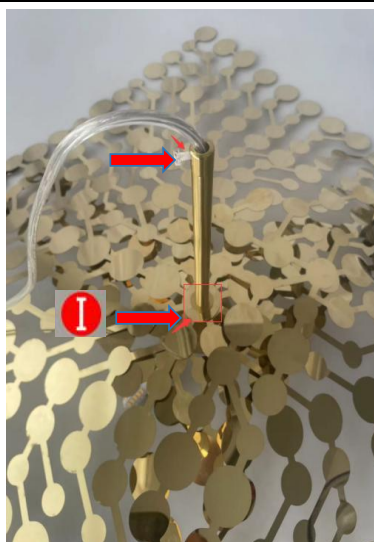
Step 1: As shown in the picture, remove the hanging plate pre-installed in the top plate, mark the hole position on the ceiling with the hanging plate, and then fix the hanging plate on the ceiling with screws (G) and rubber plug (F).

Picture 3



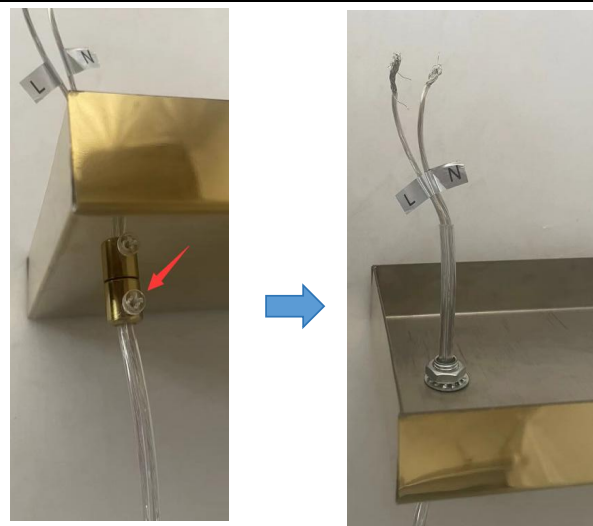
Step 2: As shown in the picture, insert the light source (G9), then take 3 pieces of B and insert them into the lamp body E, and the other 2 lamp bodies (E) can be operated similarly.

Picture 4



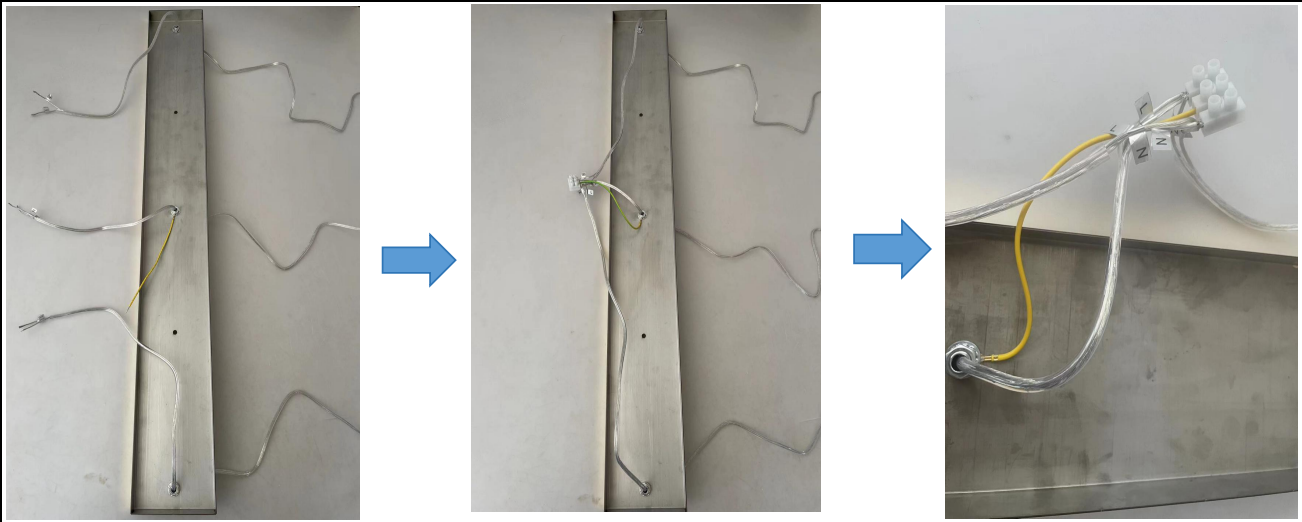
Step 3: As shown in the picture, first fix with an I, and then insert the wire into the light pole (C), and tighten the screw at the arrow to fix it.

Picture 5



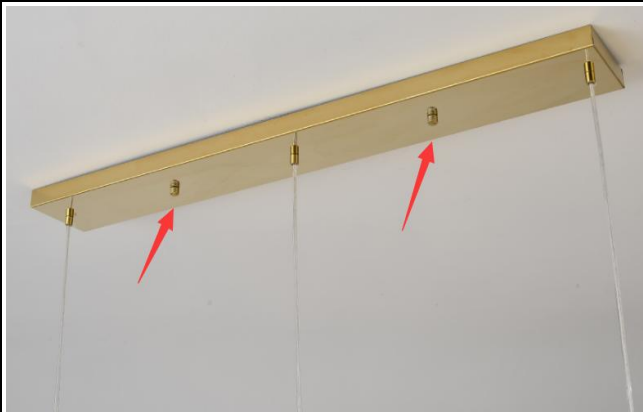
Step 4: Put the wire of the lamp body (E) through the suction top plate (A), loosen the screw at the arrow to adjust the length of the wire, and then tighten the screw to fix it.

Picture 6



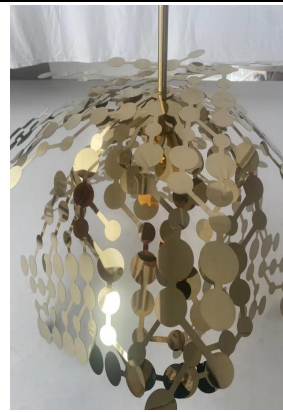
Step 5: Connect the zero line (N), fire line (L), and ground line (yellow-green) to the wiring terminal (H), and then connect to the home power supply.

Picture 7



Step 6: If there is no problem with the test light and the secure top plate on the hanging plate with screws.

Picture 8



Step 7: Adjust the outlook as you like.

Picture 9



Complete the installation.