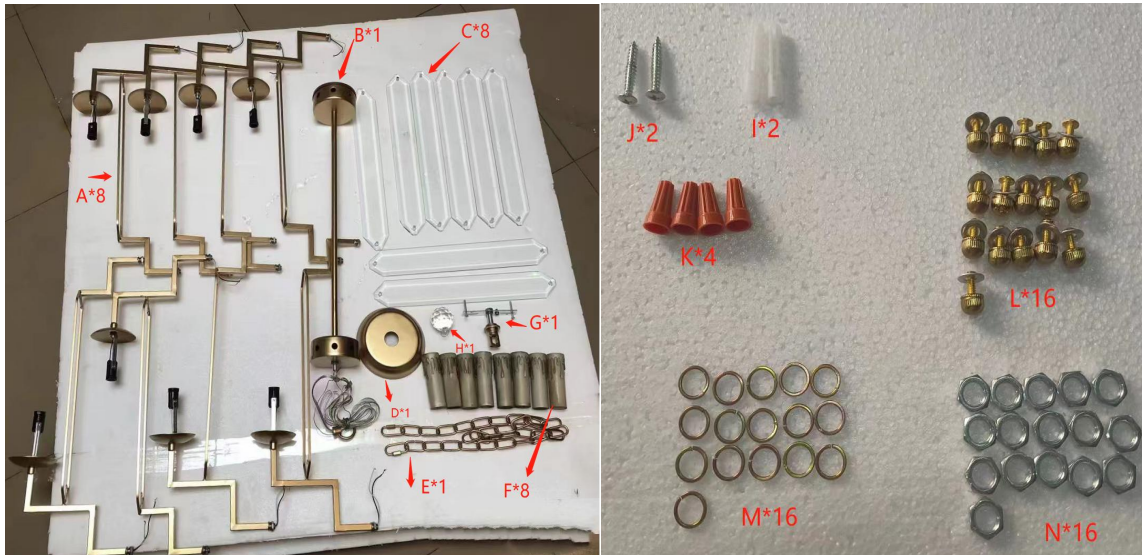


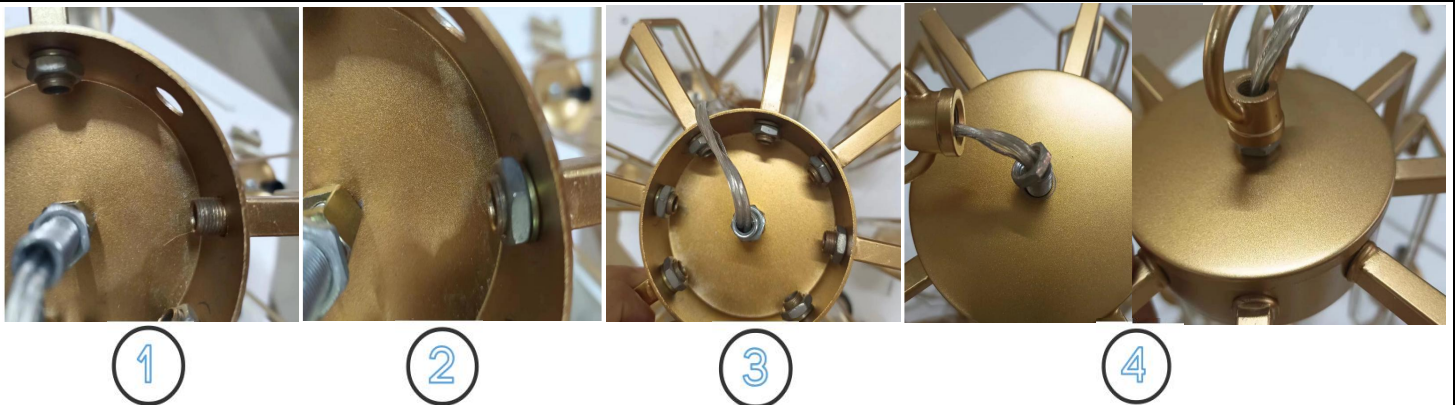
# Installation Guide

Picture 1



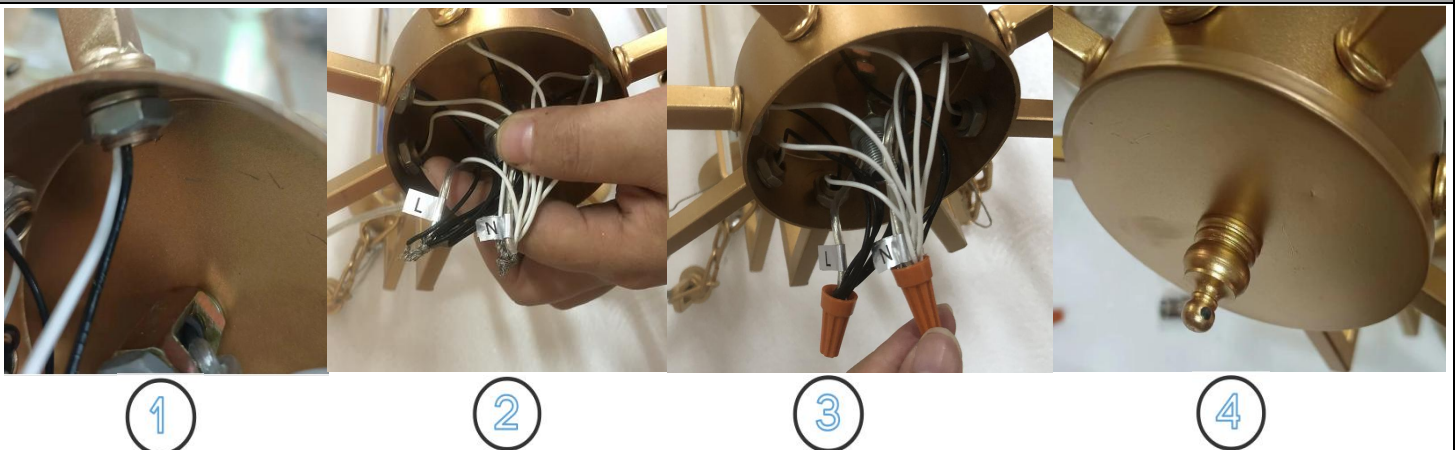
Parts list: J size: M4\*30MM, installation time 40mins, number of installers: 2, installation difficulty: 2

Picture 2



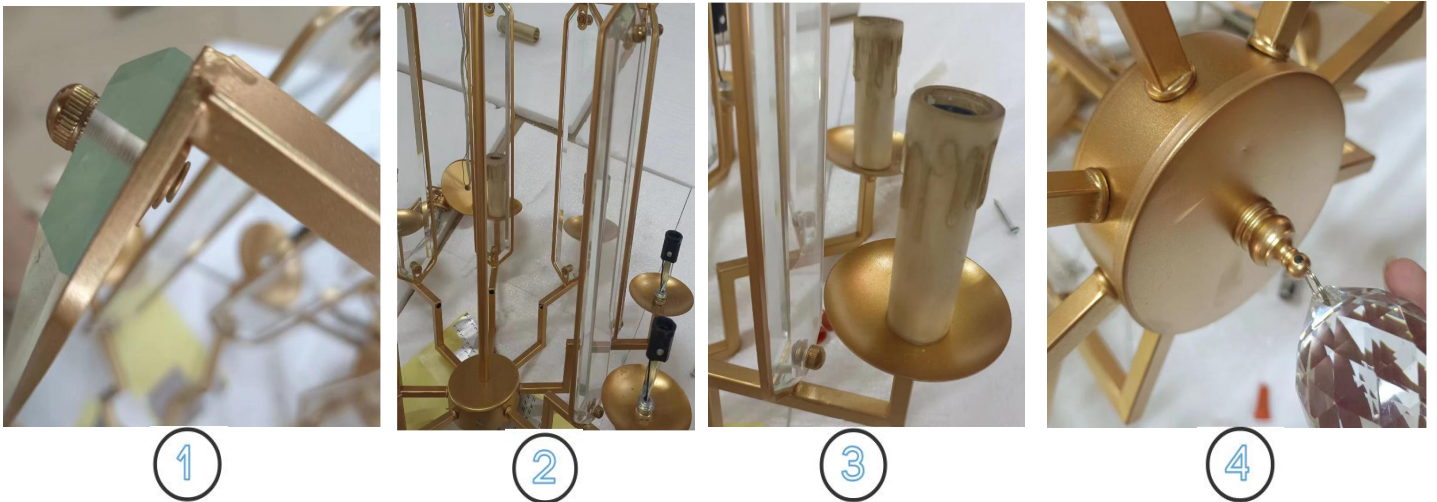
Step 1: First, open the top cover of one end of cluster body B with a lifting ring, and thread the end of A light arm without wires into the cluster body B hole. First, place the M ring and then tighten the N nut to fix it. Then, thread the A light arm in sequence, cover the top cover, and tighten the nut and lifting ring.

Picture 3



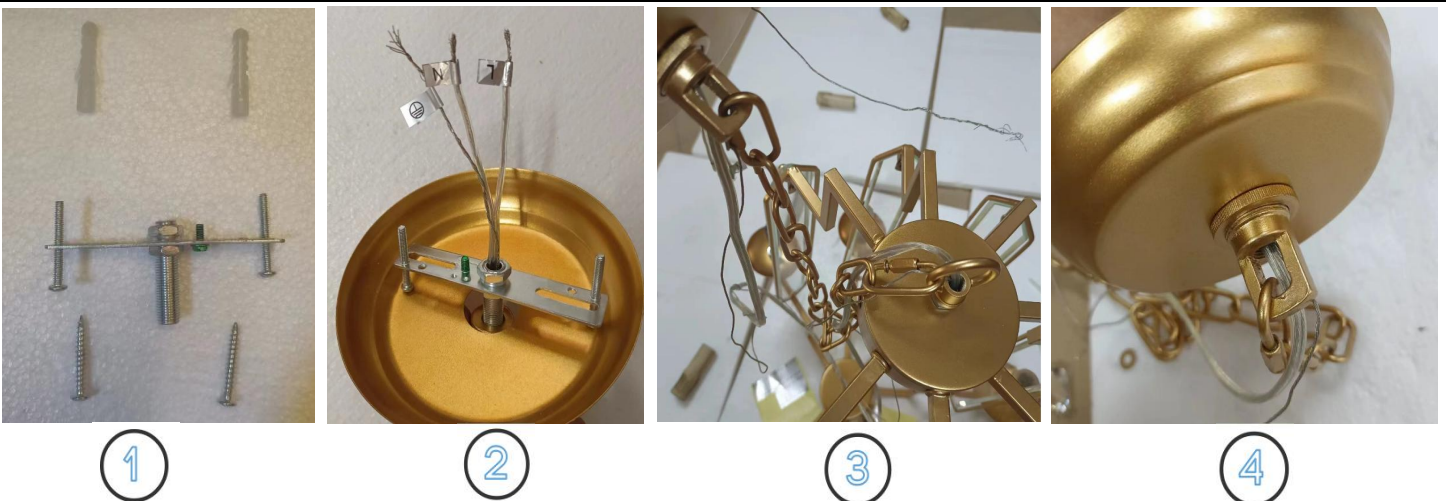
Step 2: Open the top cover at the other end of lamp B, put the wire of A lamp arm into the hole of lamp B, first put the M ferrule and then the N nut and tighten it, fix the lamp arm A in turn, and then all the black wires Twist together with the wire marked L on the transparent main line, twist together the white wire and the transparent wire marked N on the main line, use the K wire cap to fix the insulation, and then cover the top cover and screw the small nut.

Picture 4



Step 3: According to the picture, the C crystal stick is fixed up and down on the A light arm frame with the L screw, and then put on the F candle tube, and finally the H crystal ball is buckled on the bottom.

Picture 5



Step 4: Use I and J (use self-tapping screws or flat-head screws as needed) to fix the hanging plate G to the ceiling, the ceiling plate D and the wires pass through the hanging plate, connect to the home power supply according to the corresponding label of the wires, and use wiring Insulate the cap K (note: the wiring is distinguished from the neutral wire N and the live wire L), and then hook the two ends of the hanging chain E to the rings at the lamp body and the ceiling plate respectively, and finally use the ring to tighten the ceiling plate D.

Picture 6



Completion.