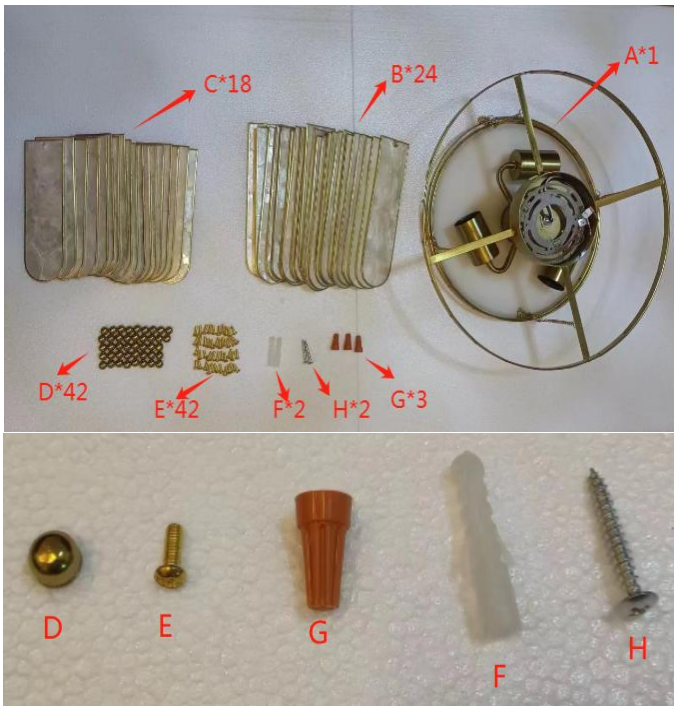


Installation Guide

Picture 1



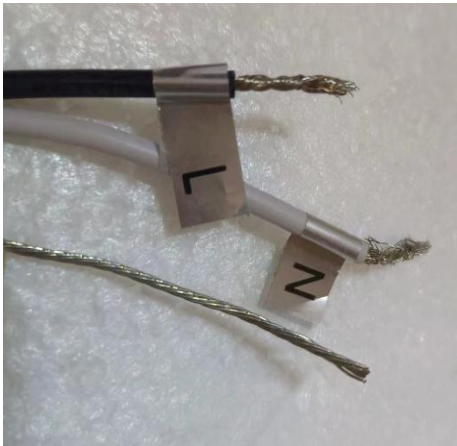
Check products and accessories: H (M4*30MM); E(M4*10MM); installation difficulty 1, installation number 1, installation time: 60min

Picture 2

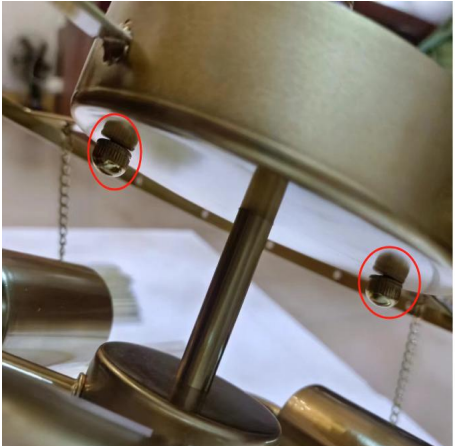


Step 1: Distach the hanging panel, secure it to the wall with screws (H) and glue plug (F).

Picture 3



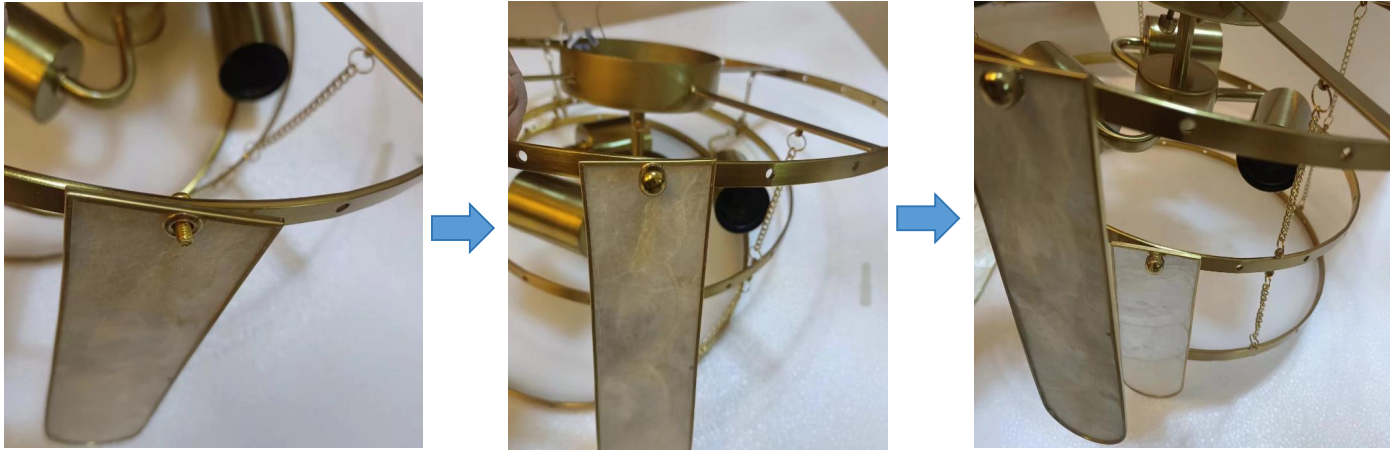
Picture 4



Step 2: Correct the zero line(N), the fire line(L), the ground line to the home power supply, and the wire cap G insulation (Note: pay attention to distinguish the zero line and fire line.)

Step 3: Secure the ceiling plate to the hanging panel with screws.

Picture 5



Step 4: As shown in the picture, install the shells to the light body with nuts(D) and screws(E). (Note hang the shell B to the top, shell C to the bottom.)

Picture 6



Complete the installation.