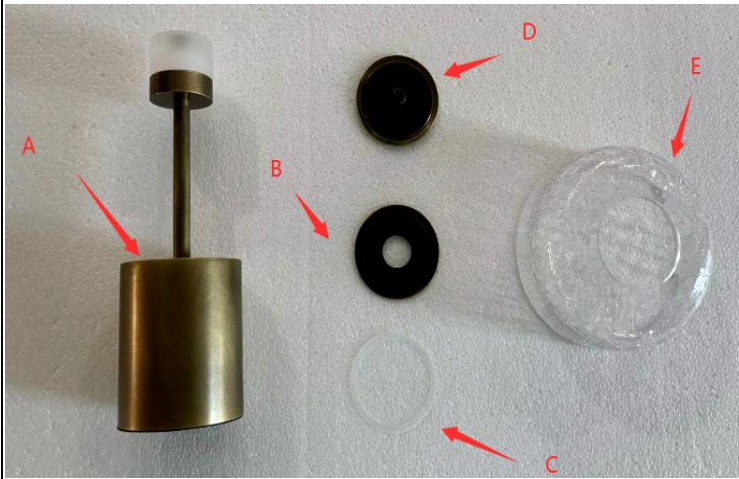


Installation Guide

Picture 1



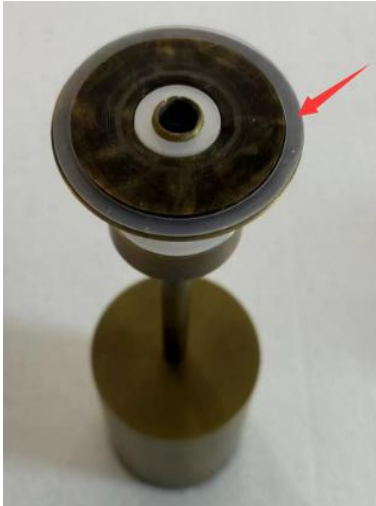
Check products and accessories, installation time 15min,
installation number: 1, installation difficulty: 1

Picture 2



Step 1: As shown in the picture, place the (B) on the lamp
body (A).

Picture 3



Step 2: Place washer (C) on top of (B).

Picture 4



Step 3: Place lampshade (E) on top of washer (C).

Picture 5



Step 4: Fasten with D.

Picture 6



Complete the installation.