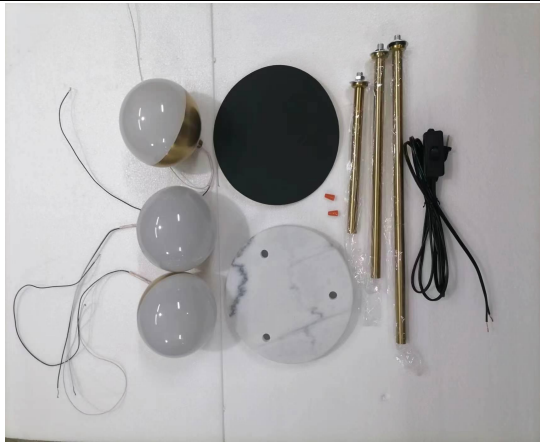


Installation Guide

Picture 1



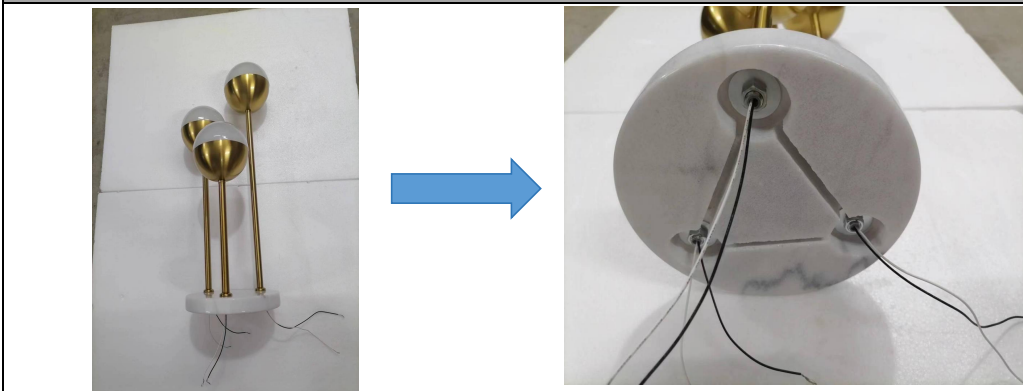
Check products and accessories: Installation time: 30min, installation number: 1, installation difficulty: 1

Picture 2



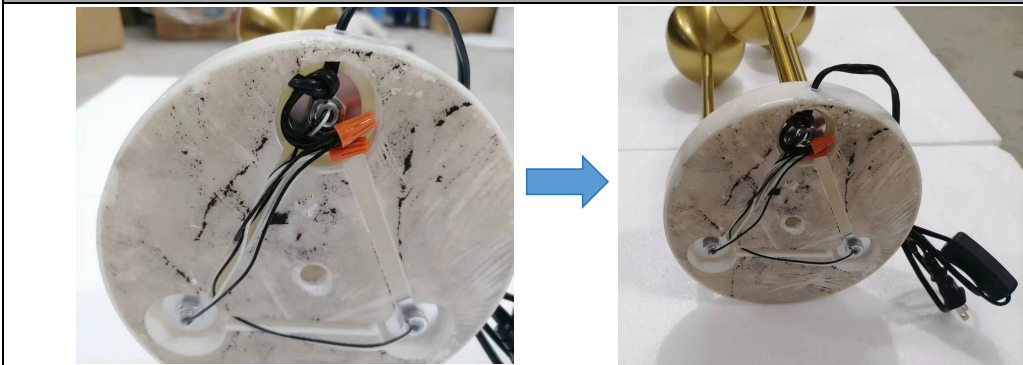
Step 2: As shown in the picture thread the lamp head into the lamp post and fix it.

Picture 3



Step 2: As shown in the picture install the base.

Picture 4



Step 3: As shown in the picture, connect the three white lines of the light arm to one of the switch wires, and connect the three black lines of the light arm to the other side of the switch wires, and insulate them with wire caps.

Picture 5



Step 4: As shown in the picture paste the bottom pad.

Picture 6



Complete the installation.