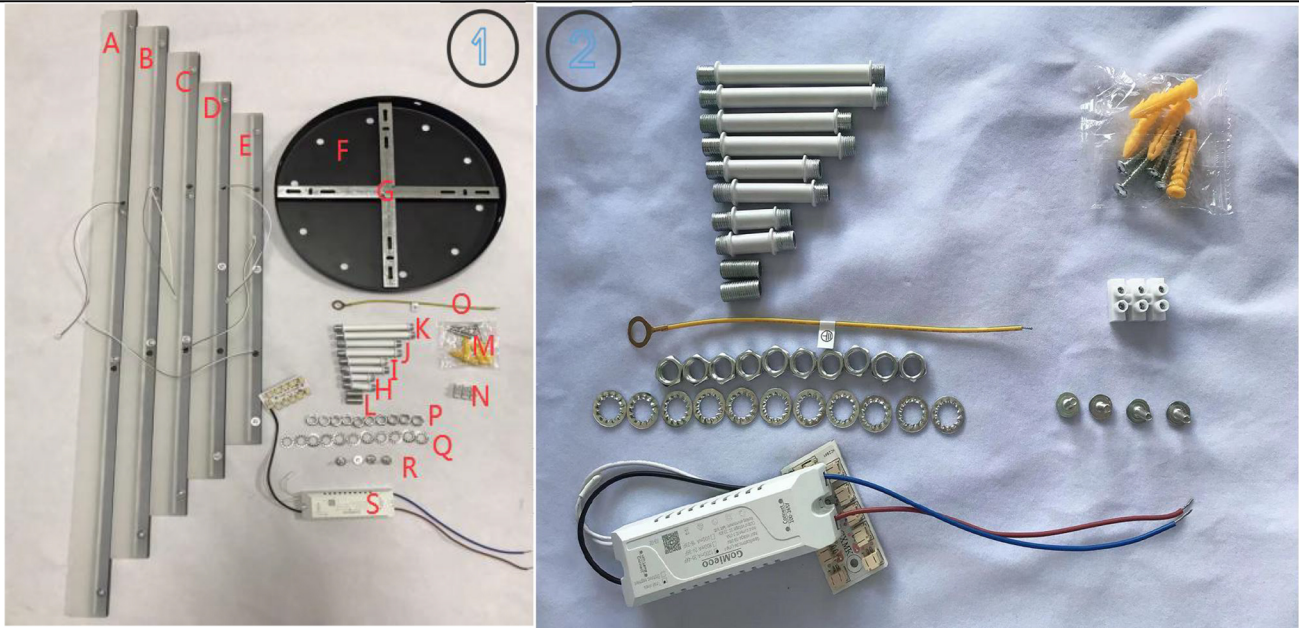


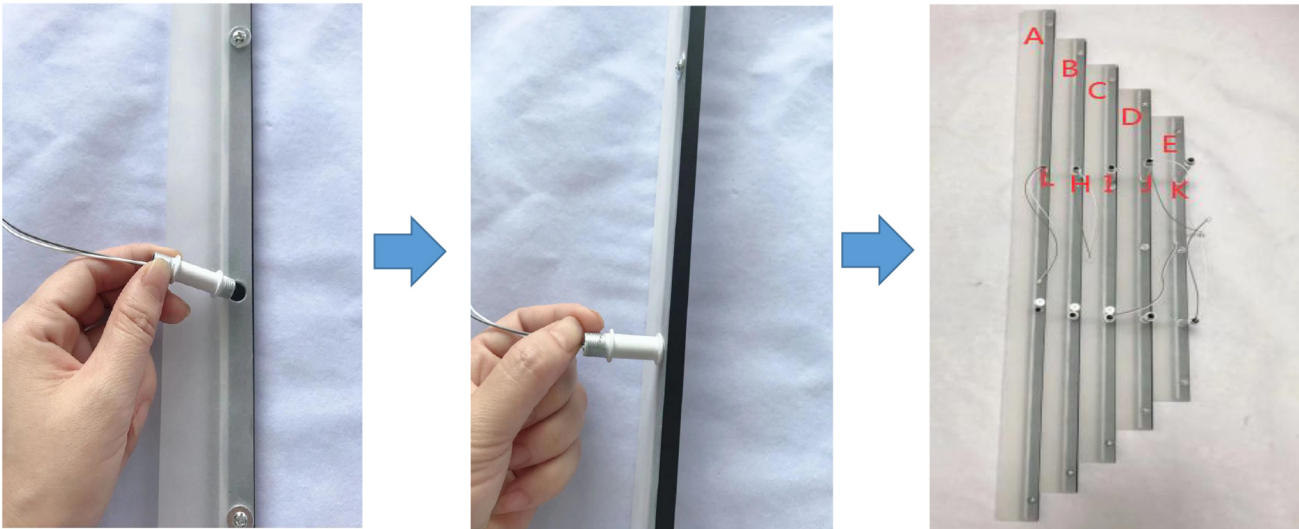
Installation Guide

Picture 1



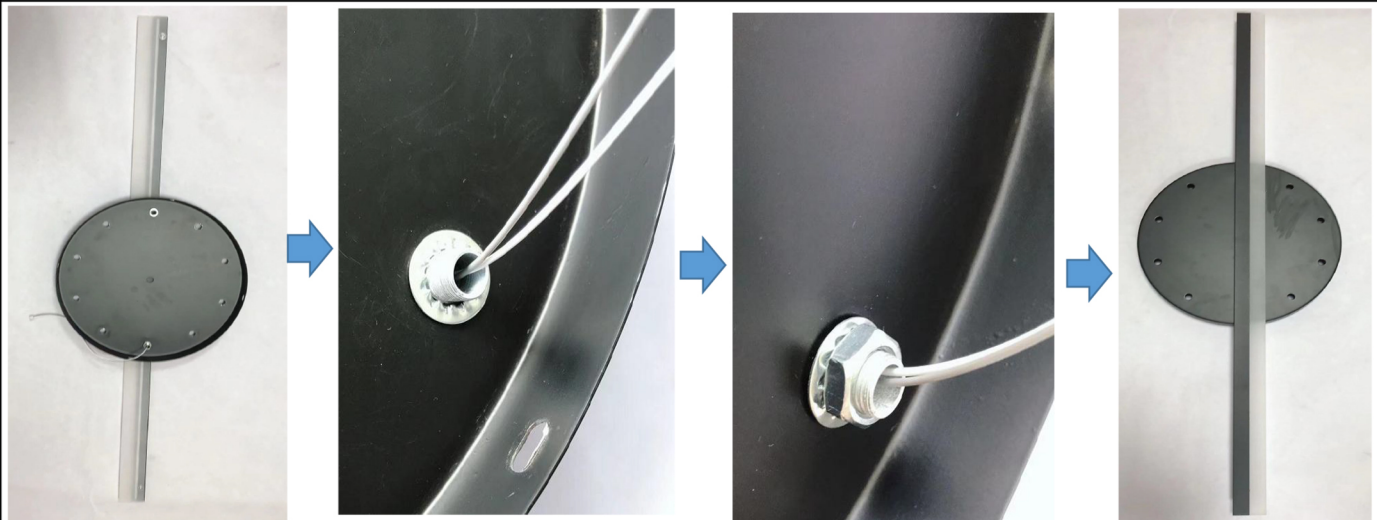
Parts List: A (900mm)*1; B (800mm)*1; C (700mm)*1; D (600mm)*1; E(500mm)*1; F*1; G*1; H (m10 * L40mm) * 2; I(m10 * L60mm) * 2; J (m10 * L80mm) * 2; K (m10 * L100mm) * 2, L (m10 * L20mm) * 2; M (m4 * L30mm) * 1, N*1; O*1; P (m4)*10; Q (m4)*10; R (m4 * L16mm) * 4; S * 1

Picture 2

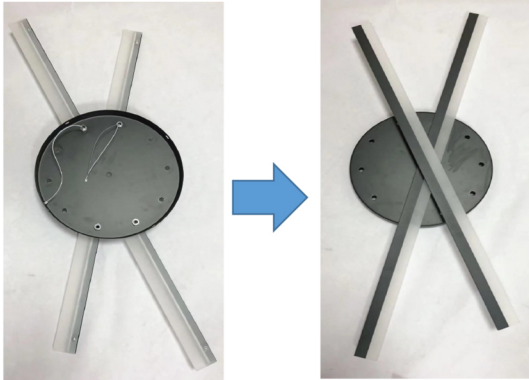
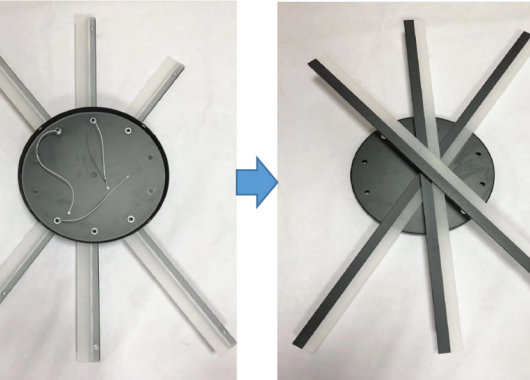
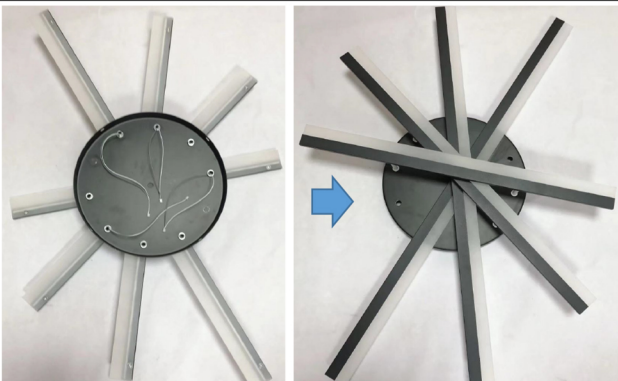
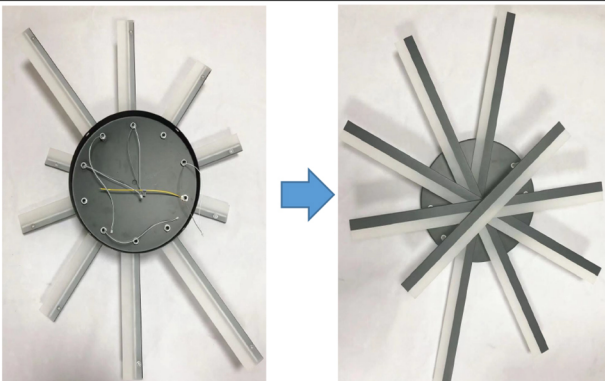
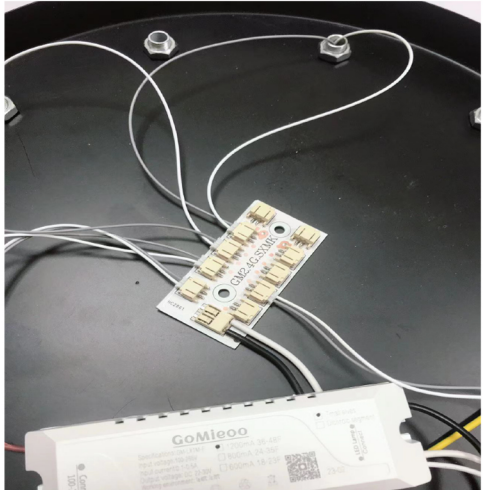
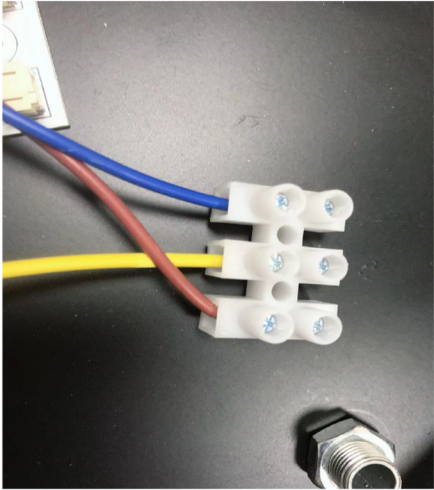



Step1: As shown in the picture, fix L on A, H on B, I on C, J on D, K on E (Note that the teeth of H, I, J and K are twisted into the lamp body with the short side down)

Picture 3



Step2: As shown in the picture, insert A lamp holder wire into F suction top plate and fasten with nut.

<p>Picture 4</p> 	<p>Picture 5</p> 
<p>Step3: As shown in the picture, insert B lamp holder wire into F suction top plate and fasten with nut.</p>	<p>Step4: As shown in the picture, insert the C lamp holder wire into the F suction top plate and fasten it with nuts.</p>
<p>Picture 6</p> 	<p>Picture 7</p> 
<p>Step5: Insert D lamp holder wire into F suction top plate and fasten with nut as shown in the picture.</p>	<p>Step6: Insert E lamp holder wire into F suction top plate and fix with nut.</p>
<p>Picture 8</p> 	<p>Picture 9</p> 
<p>Step7: Connect the driver and wire. (Note that the raised side of the terminal is inserted into the interface of the circuit board)</p>	<p>Step8: As shown in the picture wiring, the neutral line is blue, the live line is red, and the middle hole is connected with the yellow and green ground wire.</p>
<p>Picture 10</p> 	
<p>Completion.</p>	