

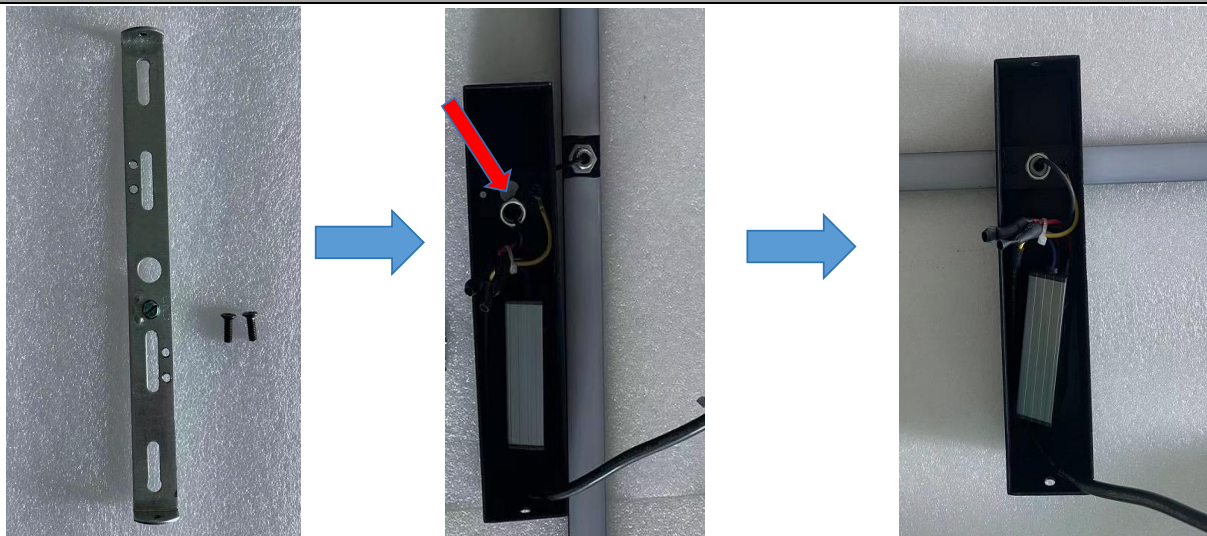
Installation Guide

Picture 1



Check accessories: self-tapping screws (4*25mm), Installation time: 30min, number of installers: 1, installation difficulty: 1

Picture 2



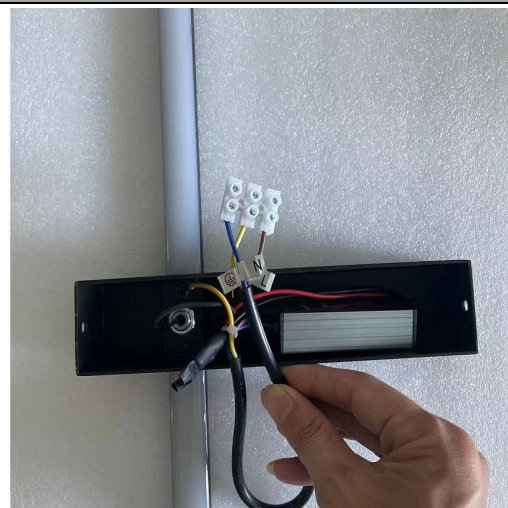
Step 1: As shown in the picture, remove the preinstalled plate and tighten the lamp body with the nut.

Picture 3

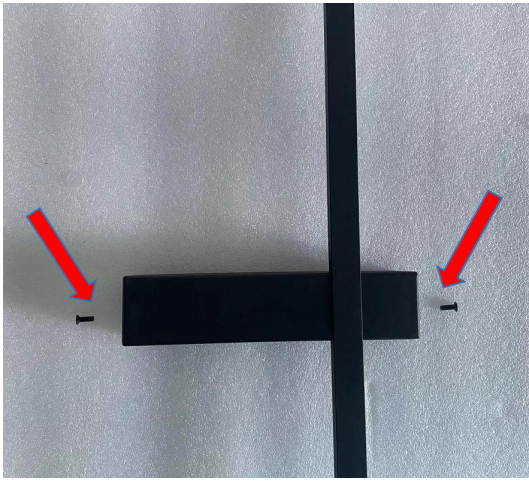



Step 2: As shown in the picture, use self-tapping screws and glue plugs to fix the hanging plate to the wall.

Picture 4



Step 3: As shown in the picture, connect the zero line (blue), the fire line (brown), and the ground line (yellow) to terminal H, and then connect to the power supply at your home.

Picture 5	Picture 6
	
Step 4: Fix the lamp body to the wall with two black screws.	Complete installation