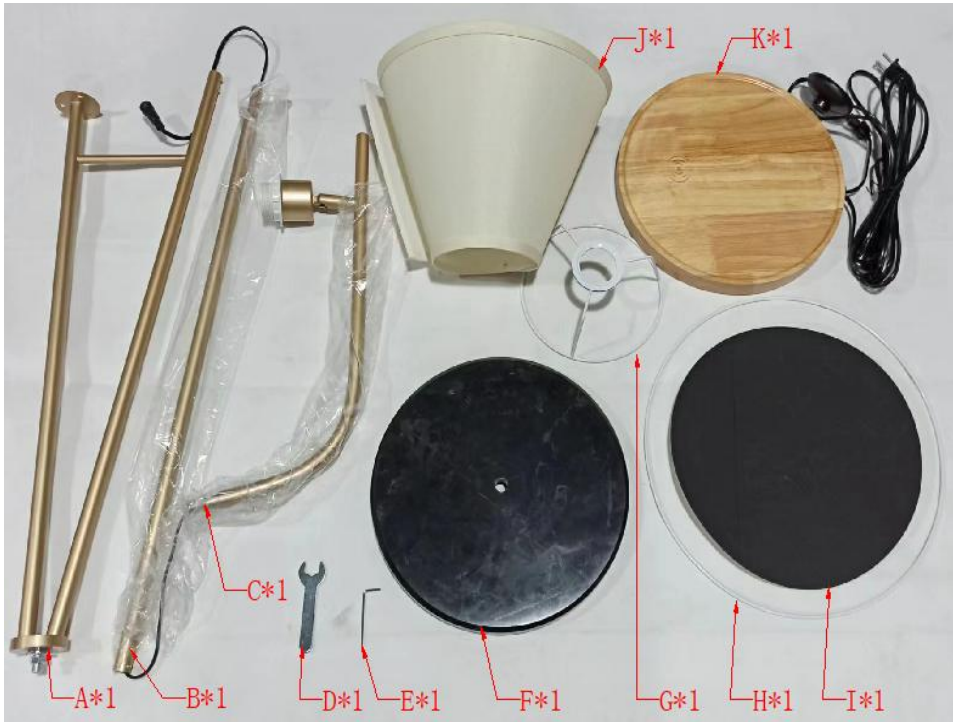


Installation Guide

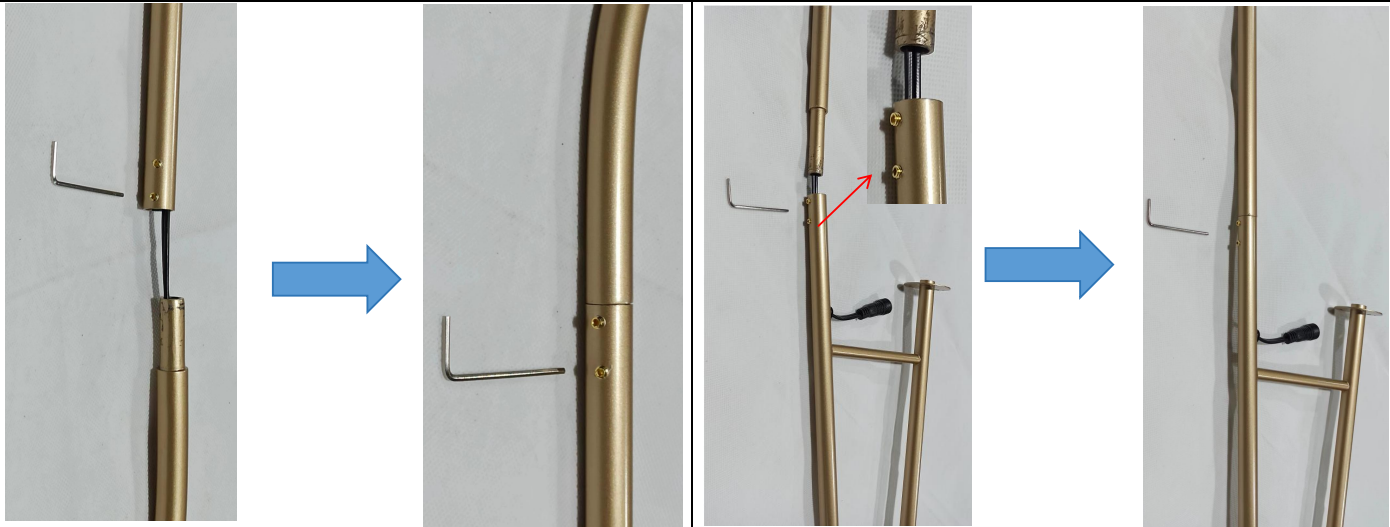
Picture 1



Check products and accessories: Installation time: 30min, installation number: 1, installation difficulty: 1

Picture 2

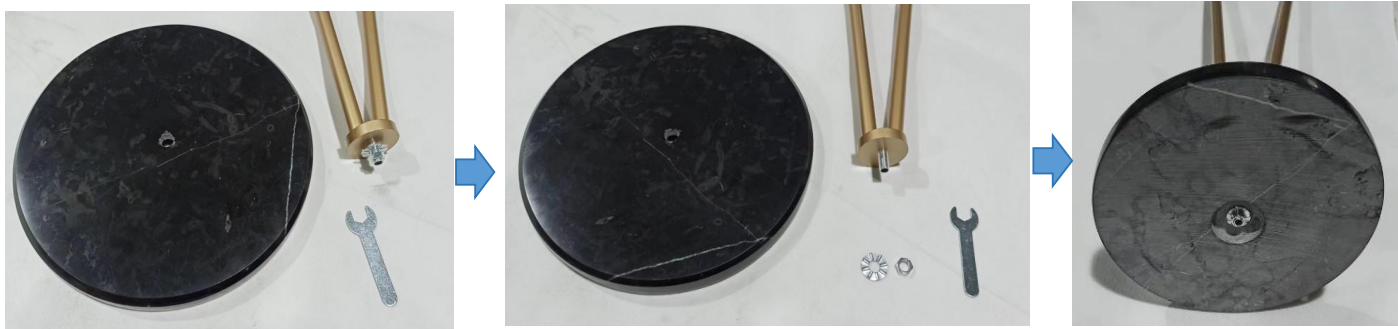
Picture 3



Step 1: Use E to loosen the screw on B, then insert C into B, and finally use E to tighten the screw.

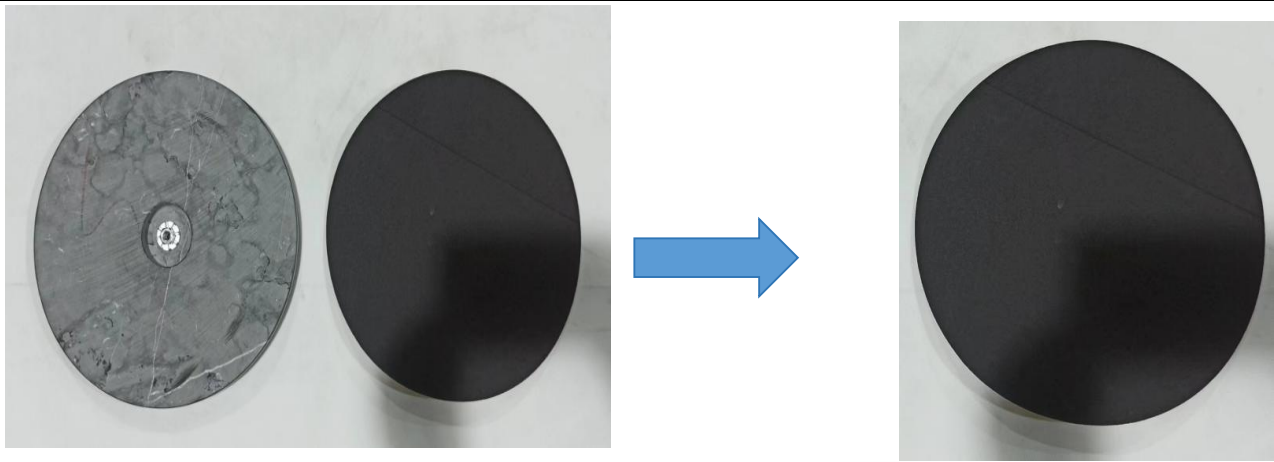
Step 2: First use E to loosen the screw on A, then insert B into C, and finally use E to tighten the screw.

Picture 4



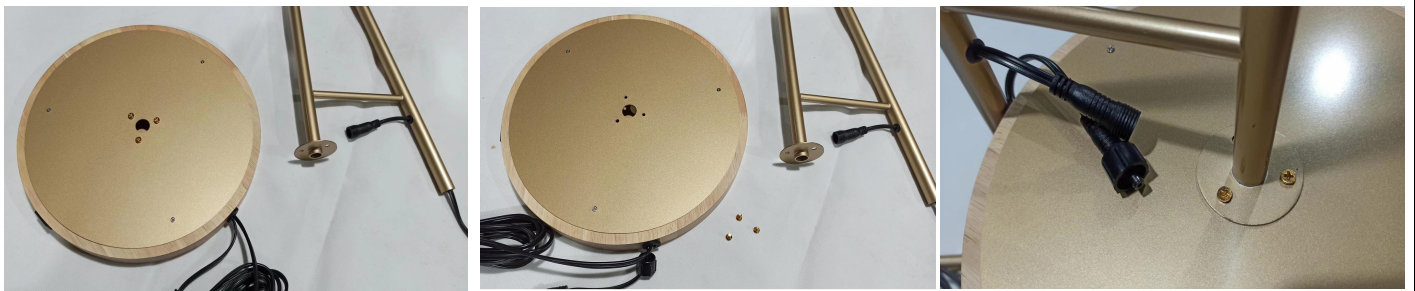
Step 3: Twist off the screw gasket on A first, and then secure F on A.

Picture 5



Step 4: Stick I on F.

Picture 6



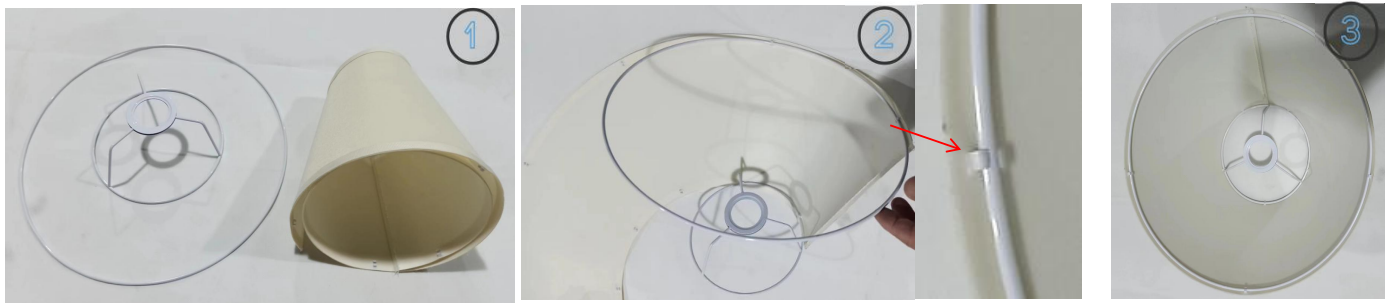
Step 5: Loosen the screw on K first, then put K on A, and then secure with the screw.

Picture 7



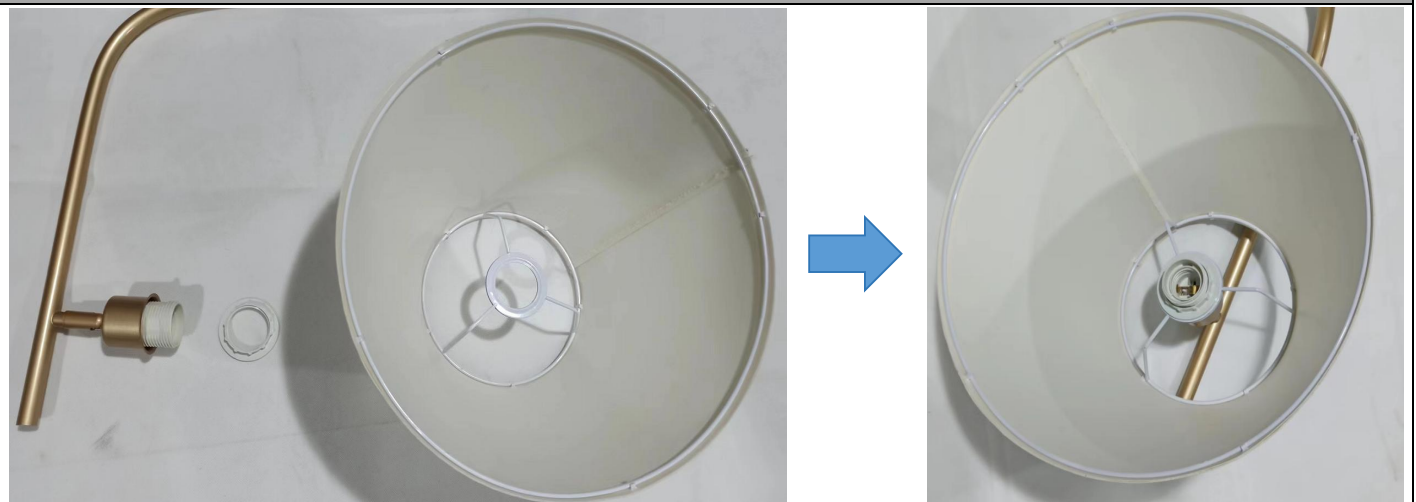
Step 6: First insert the male and female connector, and then tighten it.

Picture 8



Step 7: Secure G, H to J.

Picture 9



Step 8: Loosen the lamp cap ring first, and then use the lamp cap ring to fix the lamp shade on C.

Picture 10



Complete the installation.