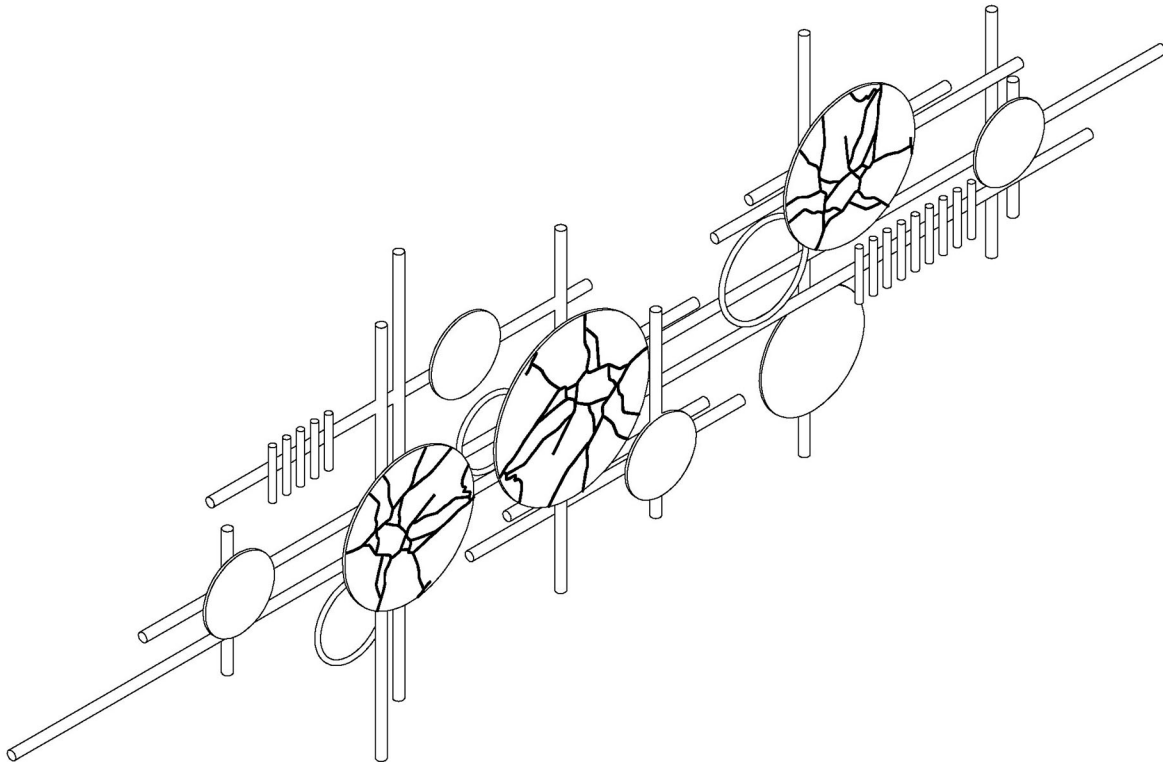


# WALL DECOR

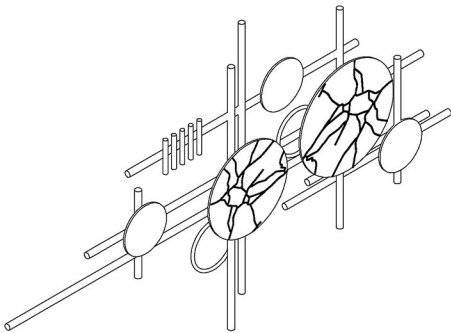
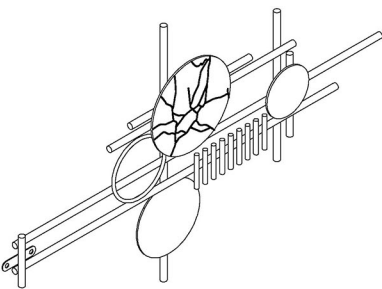




## Assembly Instruction

- Do not throw away packing materials until assembly is complete for small parts may come loose inside the carton during shipment. If parts are missing, please contact us.
- Assemble this item on a soft surface, such as carpet to protect the finish.
- During assembly, keep any small part out of reach of children as they may be fatal if swallowed or inhaled. Keep plastic packing bags out of reach of children to avoid any potential danger, such as suffocation.
- Avoid sharp objects and corrosive chemicals to prevent damage to the product or bodily injury.
- Clean with damp cloth. To protect the finish, avoid use chemicals and household cleaners.

You may need to purchase extra specific mounting set if the installation is for plaster wall.



Parts List & Accessories List

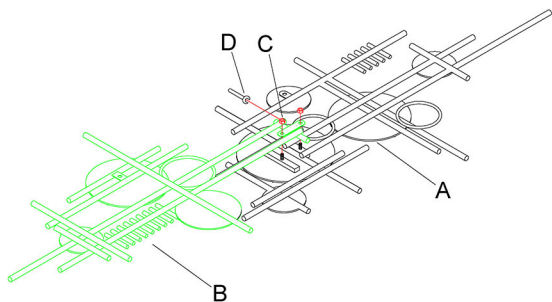
<div>Ax1</div> <div></div>	
<div>Bx1</div> <div></div>	
<div>Cx2</div> <div></div>	<div>Dx1</div> <div></div>
<div>Ex2</div> <div></div>	<div>Fx2</div> <div></div>

# Installation Steps

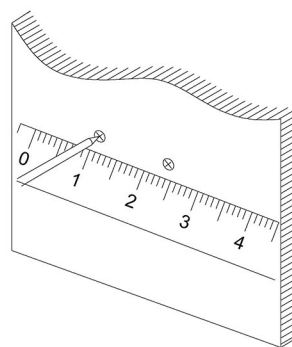
## Step 1

C  x2

D  x1

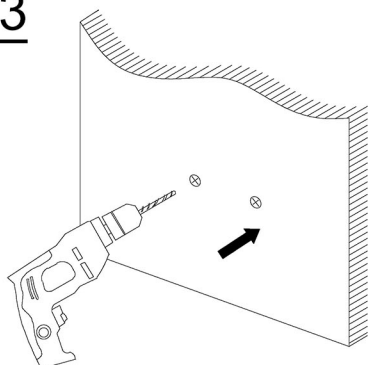


## Step 2



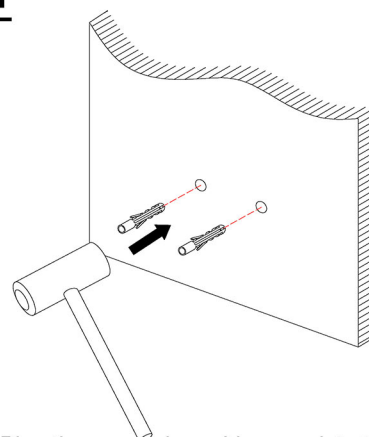
Step 1: Select the location of the wall space to be installed. Measure the distance of the product hook with a ruler, measure the same distance on the wall (if the product has only one hanging hole, you can skip this step), and mark the hole position on the wall with a pen.

## Step 3



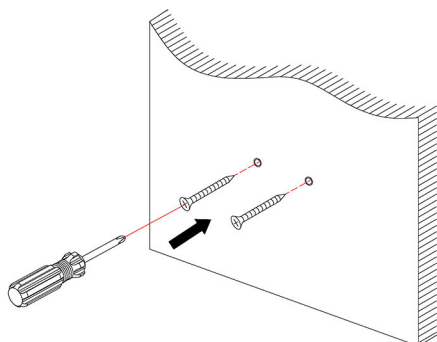
Step 2: Punch holes at the marked positions with an electric drill, the depth of which is the length of the expanded rubber cap.

## Step 4



Step 3: Plug the expansion rubber cap into the hole.

## Step 5



## Step 6

