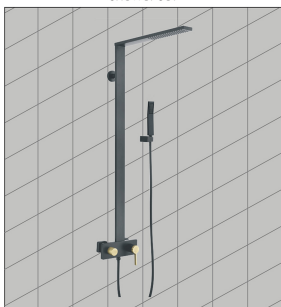


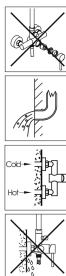
Shower Mixer Fast Installation Instruction

Shower Set



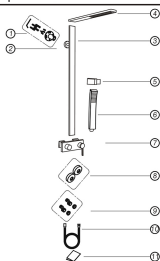
Step1、Installation Condition

1. Refer to the «Standard Part List» when you open package, check all parts available.
2. Determine products applicability and functionality in relation to mounting surface.
3. Do not disassemble mixer body by yourself.
4. Determine position where hot pipe and cold pipe will be fitted. Left for hot water, and Right for cold water supply.
5. Determine inlet pipes and supply stopper have been installed and cleaned, also ensure no impurities in pipeline.
6. When finished installation, check all joints and connections for leaks.
7. Water pressure shall be: 0.05MpaWater Pressures0.75Mpa.



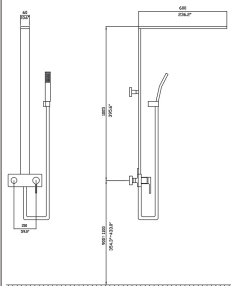
KIND TIPS: 1. It is recommended to install the faucet after the house is properly cleaned.
2. Suggestion to fit the faucet in the severely corrosive environments; if needed, please often clean the faucet surface in order to maintain its service life.

Step2、Standard Part List



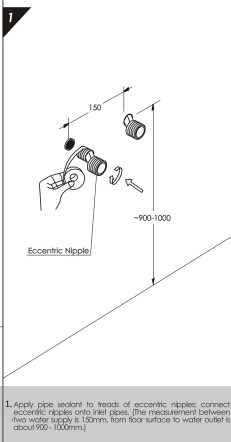
(No.)	(Part Name)	(Quantity)
1	(Upper Seat)	1
2	(Upper Decorative Cover)	1
3	(Main Pipe)	1
4	(Top Shower)	1
5	(adjustable shower holder)	1
6	(Hand Shower)	1
7	(Faucet Body)	1
8	(Decorative Cover)	2
9	(Eccentric Nipple)	2
10	(Shower Hose)	1
11	(Instruction Manual)	1

Step3、Essential Dimension Diagram

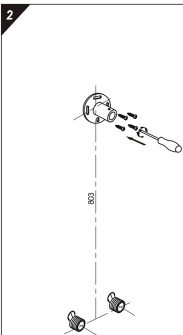


Our company will continue to improve its product design and the performance policy increasingly. And retain to its product specification change authority. Do not inform at the appointed time.

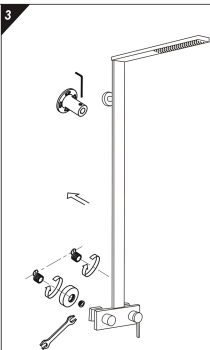
Step4、Installation



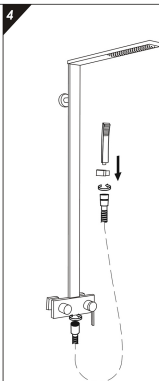
1. Apply pipe sealant to threads of eccentric nipples; connect eccentric nipples onto inlet pipes. (The measurement between the water supply is 150mm, from floor surface to water outlet is about 900-1000mm.)



2. Refer to Essential Dimension Diagram for correct measurement.



3. Assemble Faucet part together, install eccentric nipples with decorative covers; insert gasket and nut and tighten onto eccentric nipples with wrench.



4. Connect top shower to shower pipe, then connect shower hose with faucet body and hand shower.

Step5、Application Instruction

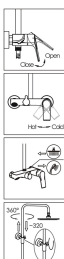
1. Turn on water supply, check all joints and connections for leaks.

2. Handle turn out as open, the angle is bigger, the flux is bigger; conversely, the angle is smaller, the flux is smaller until closure. When the handle turn out and revolve left, the hot water supply is increased; revolve right, the cold water supply is increased.

3. In normal condition as hand shower water-out; Pull up the diverter, can change for top shower water-out; then hand shower can not water-out. When cut off the water source, the diverter resume back, open the water source, the hand shower water-out.

4. Press the diverter in the water press is castasticism or the water press is too small, then deal rotate 90 degree, can force hand shower water-out turn to top shower water-out. According this step replacement, come back the original state.

5. Loose the small handle on the pipe; the body upside's big apchon can flex adjust for about 300mm and circumference for 360 degree, easy to adjust different height and angle's best shower place.



Step6、Care and Maintenance

In order to keep the mixer surface bright, please keep often or regularly to clean the mixer.

- Wash faucet with clean water, and wipe with soft cotton cloth.
- Avoid using cleaning powder, harsh cleaning chemicals, brushes, and cloth with coarse surface to prevent scratching and corrosion.
- Do not use acidic cleaning agents for washing the faucet as it may cause corrosion on the surface of faucet. Rinse off with water immediately if the faucet in contact with harmful acidic agents.
- When use, please do not pull the shower hose forcibly, in order to avoid the hose cracks.

If must carry on the massive clearing, please obey the following procedure:

1. Use clear water and the soft cloth, eliminate the superficial dirt and the filthy membrane as far as possible;
2. Use the any following cleanser to remove the superficial dirt and the filthy membrane:
 - Temperate liquid cleanser.
 - The colorless glass cleaner, does not have the powdery cleanser which the abrasive action and can dissolve completely (according to instruction mid).
 - Polish liquid which does not abrasive action.
3. After cleanly, please remove the complete cleaning agent with the clear water, and wipes with soft cotton fabric.

