

Smart Toilet Installation Guide

Intelligent toilet manual precautions for use

Content

Before Using

Safety Instructions.....	01
Precautions for Use.....	05
Parts Identification.....	07

Toilet Installation

Installation Guidance.....	09
Installation Steps.....	10
Hose Connection And Installation.....	12
Remote Control Installation.....	13
Trial Run.....	13

Instruction for Use

Side Control Panel Instruction.....	14
Remote Control Instruction.....	15
Usage Instruction.....	16
Automatic Sensing Function.....	17

Appendix



Remote Control Battery Replacement.....	18
Backup Battery Replacement.....	18
Usage Instruction.....	19
Fault Judgement And Solutions.....	20
Daily Maintenance.....	21
Technical Support.....	22
List of Materials.....	23

Safety Instructions



Please read the safety instructions carefully before using.

The precautions listed here are important in relation to safety and should always be strictly observed.

The meaning of the diagram is as follows

	Caution	It means that if this sign is ignored and product handled improperly, the users will be dead or be injured seriously.
	Note	It means that if this sign is ignored and product handled improperly, the users will be injured seriously or subject to property loss.

Examples and descriptions of the Diagram

	<ul style="list-style-type: none"> It means prohibition. The left diagram indicates "Disassemble prohibited"
	<ul style="list-style-type: none"> It means that it must be observed. The left diagram indicates "strictly abide by"

Caution



Do not spray water or detergent on the main body or electronic plug

No sprinkling

- May cause fire or electric shock.
- May cause breakage or damage to the toilet seat or water seepage in the room.

This product belongs to electronic products, please do not install the product in an easily splashed or humid place. Please install an exhaust fan and other exhaust equipment to ensure unobstructed air flow in the bathroom

- Otherwise, it may cause a fire or an electric shock.

Please set the socket for power wiring as follows

- If the wiring is not as follows, it may cause a fire or electric shock.

- Please use high inductance, fast type leakage switch (rated induction current below 4-6mA) or protect with insulated transformer (above 1.5KVA, below 3KVA) for the circuit of socket.
- The installation position of the socket must be more than 0.3m from the ground and as far away from the bathtub as possible.

The grounded wire equipped with the product must be grounded, please be sure to connect to the ground wire

- Otherwise, it may cause an electric shock.

Note: The grounding treatment mentioned here means that the grounding resistance is below 4Ω protective earthing, and the grounding wire uses copper wire of 1.6 mm or more in diameter.

When using in the bathroom

Please make sure power supply and the plug is sealed with silicone to prevent the water

- Otherwise, it may cause a fire or electric shock.

Caution



Do not use in humid places

Do not install this product in humid places such as Shower room. (Prevent water from entering electronic components)

- May cause a fire or electric shock.



Disassemble prohibited

Never disassemble or repair or modify by yourself

- May cause a fire or electric shock.



Prohibition

Malfunctioning products are forbidden to use

- Under the following circumstances, please unplug the power supply and close the water valve to stop supplying water.

Fault refers to:

- The main body or water pipe leaks water.
- The product is cracked or damaged.
- There is abnormal noise or peculiar smell.
- The product smokes and abnormally hot.
- Toilet blockage.

- Fault products are forbidden to use, otherwise, it may cause a fire or electric shock and even indoor water seepage, etc.



Prohibit the touch with wet hands

It is forbidden to plug or unplug the power supply with wet hands

- May cause an electric shock.



Prohibition

Do not damage the power cord and toilet connection line

It is forbidden to pull, modify, heat, twist, place heavy objects on the power cord and toilet connection line.

- Damaged products are forbidden to use, otherwise, it may cause a fire or electric shock or short circuit.



Prohibition

Do not use loose or shaking power outlets

- May cause a fire or electric shock.



Prohibition

Water except for tap water and potable water is forbidden to use

- May cause skin inflammation.



Prohibition

Do not use the multi-socket socket

- Please do not connect the wire or use the extension cord when using, it may lead to heat and cause a fire and electric shock.
- Defecation clean is a special cleaning function, it is recommended to use only once per toilet, in order to avoid damage to the human body caused by multiple use in the short term.

Caution



Required

Attention to prevent low temperature burns

- Please adjust the seat temperature to normal level when sitting for a long time.
- Please adjust the seat temperature to the normal stage, the wind temperature to the low level, when the following people use "thermal seat" and "warm air drying" functions.

- Children, the elderly, and other users who cannot adjust the appropriate temperature by themselves.
- People with walking problems such as the sick and disabled.
- Sleepy people who took medicines, sleeping pills, cold medicines, etc., with sleepy side effects, drank too much, got overtired, etc.

Caution



No fire

Do not keep cigarettes and other burning stuff nearby

- May lead to a fire.



Prohibition

It is forbidden to put your fingers or sundries at the warm air outlet It is forbidden to touch the warm air outlet with hands or cover it with cloth

- May cause burns, electric shock, fire.
- Please be careful when children and the elderly using.



Prohibition

Do not apply force, stand on the seat ring, the flip lid or the main body, and heavy objects are forbidden placed on it

- May cause product to crack, the main body to fall apart, the person to be injured.
- Toilet may be damaged and indoor water seepage will occur.



Prohibition

Use diluted kitchen detergent (neutral) to clean. Avoid these products:

(toilet cleaner, detergent, petrol, banana water, cleaning powder and nylon brushes, etc.)

- May damage and crack the plastic, deforming and cracking it and causing personal injury.
- May damage water pipes and cause water leakage.



Prohibition

When opening the water inlet angle valve, do not remove, or rotate, open the water filter net

- May cause water leakage.



Prohibition

Do not bend or damage the water filter screen

- May cause water leakage.



Prohibition

Do not flush any sundries except excrement and toilet paper

- May cause the water closet to be blocked and the sewage will leak out of the room.



Required

Disconnect the power plug for a long time of not using.

- Please unplug the power supply for safety reason. May cause dermatitis by the rotten water when reused.



Required

Close the water angle valve to stop supplying water when water leaking



Required

Prevent damage caused by freezing

- May cause damage to the water inlet configuration and the interior body, and leakage may occurs.



Required

Tighten the water filter net when installing

- Otherwise, it may cause water leakage.

Please implement warming, to raise the rest room temperature



Required

Make sure the power plug in

- Ensure the power plug is plugged in before using, and the plug and socket fit closely without looseness or incomplete insertion
- Otherwise, it may cause a fire due to heat.
- Disconnect the power plug for a long time of not using.



Required

When the toilet is blocked, unplug it and use a commercially available pipe unblocker to remove the blockage

- Otherwise, it may lead to sewage leakage and indoor water seepage when automatically cleaning.



Required

Do not install it in a place directly exposed to light

- May cause discoloration, aging, and deformation.



Precautions for Use

Cleaning Mistakes

Do not wipe the main body with hard and coarse cloth or tools to avoid scratching.

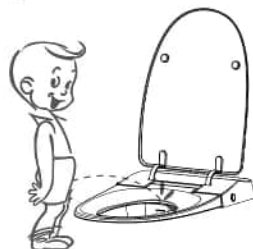


Avoid directly washing with water.



Daily Maintenance

Avoid splashing urine on the main body or spray nozzle.



Pull out the power plug during the thunder storms.



Improper Operation

Shall not cover the seat sensor, human infrared sensor, and the transmitting signal and receiving signal of the remote control.

- May cause the smart toilet misoperation.

Keep away from the main body when using the radio, etc.

- The radio may be garbled

Do Not Lean Back On The Flip Lid

- May cause crack.

Put Away The Child's Seat Placed On The Seat After Using

- May cause some functions unavailable.

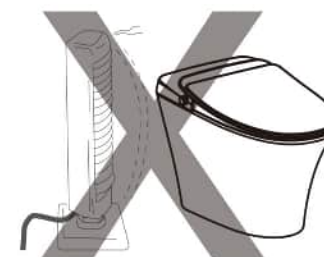
Precautions for Use

Take anti-freeze measures to prevent freezing damage during the freezing night in winter.



Do not put heaters near the main body.

- May cause discoloration or malfunction.

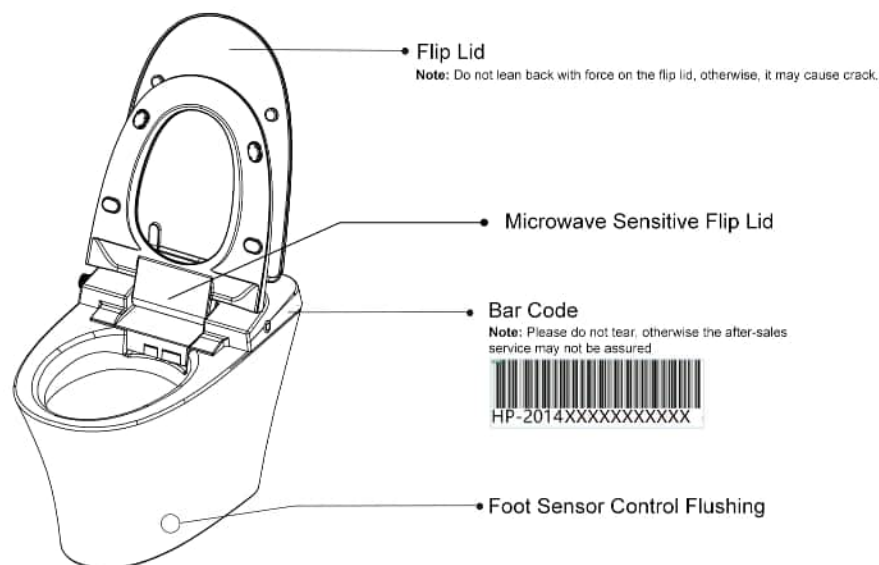
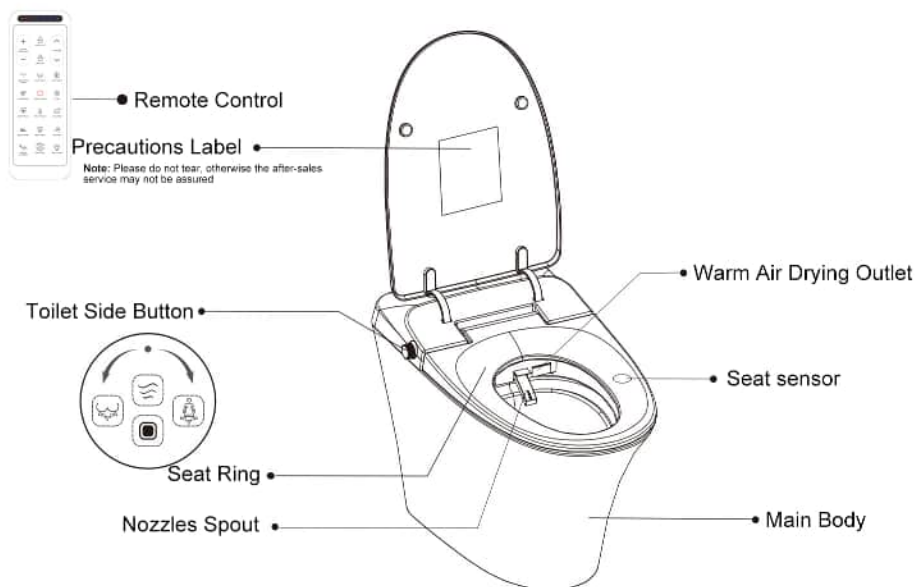


Do not roughly open the seat ring or flip lid

- May cause crack or malfunction.



Parts Identification



Main Functions

FRONT WASH	REAR WASH	AIR DRYING
POSITION	WATER PRESSURE	FLUSH
WATER TEMP	AIR TEMP	SEAT TEMP
DEFECATION CLEAN	CHILDREN	

Humanized Functions

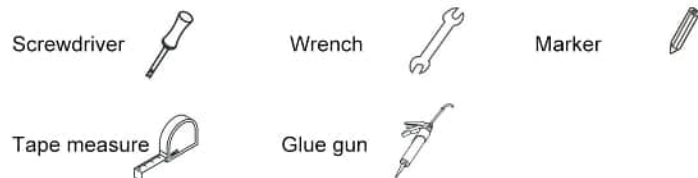
NOZZLE CLEANING	NIGHT LIGHT	MENSTRUAL
COLD&HOT	REMOTE CONTROL	Automatic Cover Flip
Automatic Seat Flip		

Humanized Functions

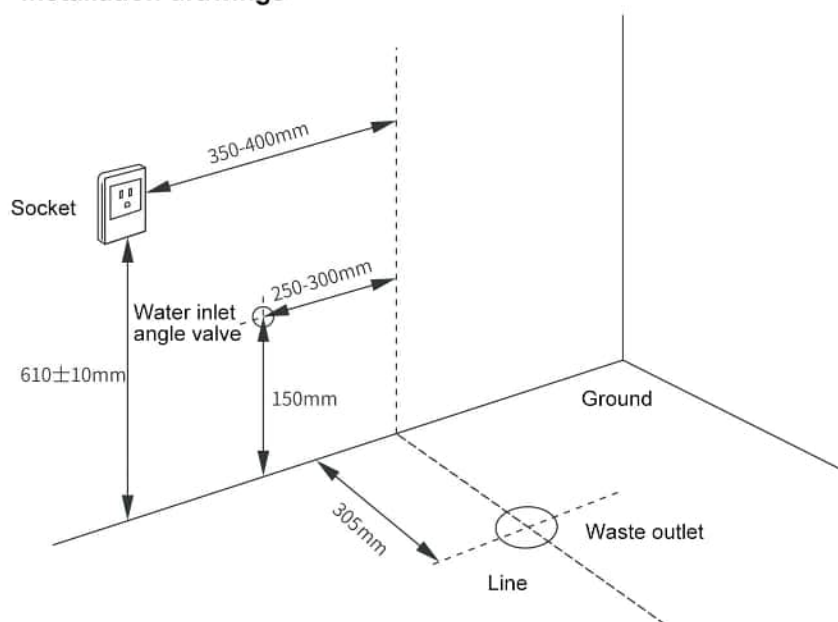
Earth Leakage Prevention	Fireproof
--------------------------	-----------

Installation Guidance

List of Materials



Installation drawings



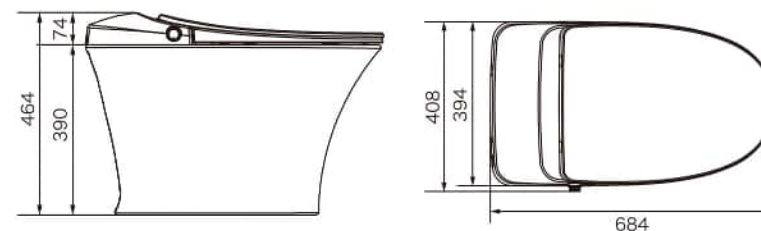
Caution

Please set the socket as follows

1. Ensure the socket properly grounded.
2. The power cord length is 1.2m and be located close to the socket, convenient to install and remove, and as far away from the bathtub as possible.
3. Use waterproof socket and don't use extension power cord to connect.
- May cause a fire or electric shock.

Size Drawings

unit: mm



Notice before installation

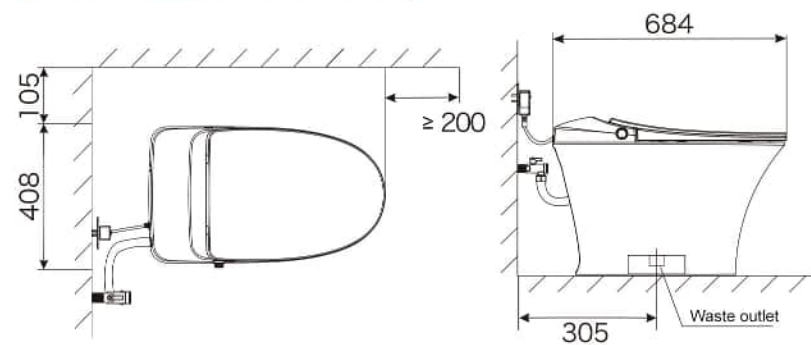
1. Test water pressure: more than 1.32 gallons within 15 seconds.
2. Before installation, turn on the water pipe for 2 minutes and then connect to the inlet pipe.

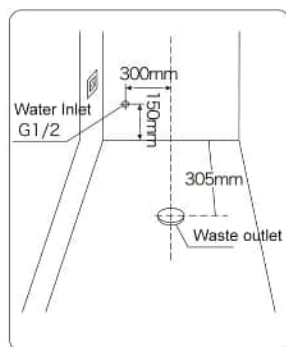


Installation Steps

1. While ensuring the required installation space, please confirm that the opening and closing of the door will not affect the installation of product, and the distance between the water inlet pipe and the ground must be more than 150mm.
2. Please confirm the position of the waste outlet and wax seal before installation. (Refer to the pic shown on the right)

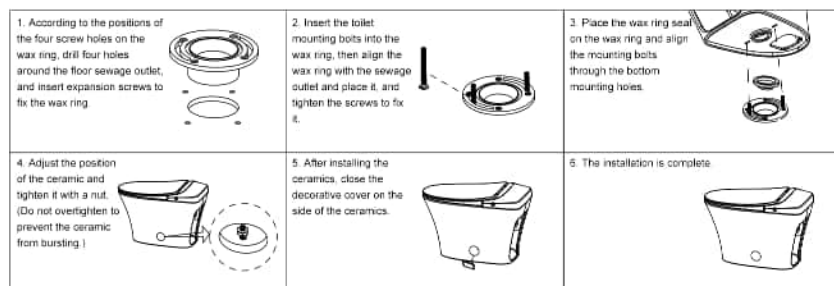
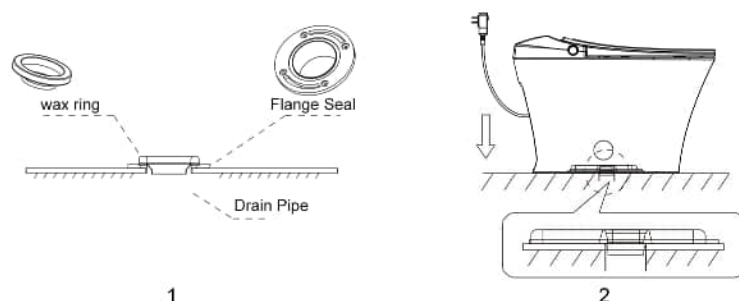
Installation Sketch Map





Installing Wax Ring and Toilet

1. Put the wax ring on the waste outlet and seal it well. (Refer to pic1)
2. Put the toilet drain on the wax ring. (Refer to pic2)
3. Adjust the position of the toilet and seal it with glass glue after the installation is stable.



Note

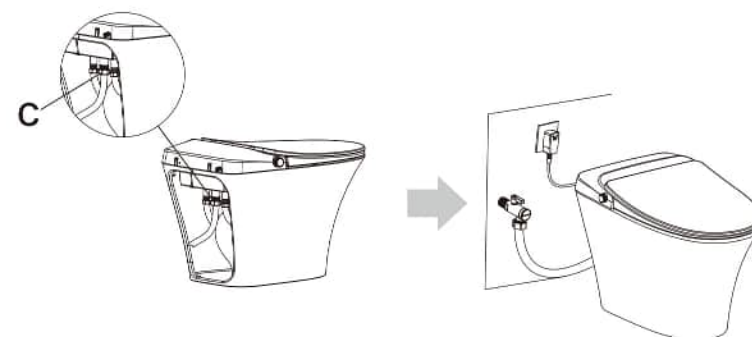
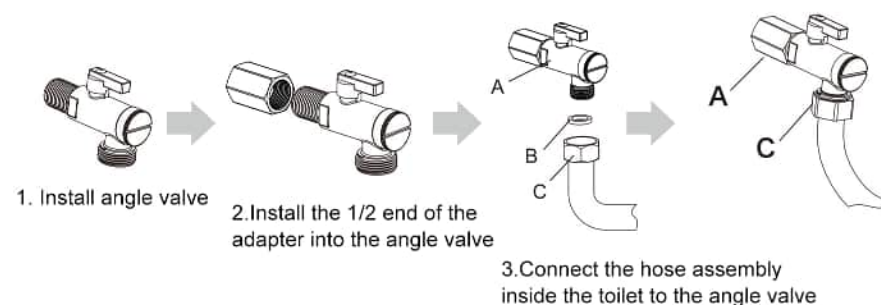
1. Smart toilet accessories have been commissioned, personal disassembly is strictly prohibited. Please use the fittings and hoses provided by our company. Old fittings and hoses cannot be reused. If have any questions, please contact local retailers or our after-sales service department.

2. All contents of this instruction manual are based on the latest conditions at the time of printing. We reserve the right to make changes without further notice.

Hose Connection And Installation

Before install the water inlet angle valve, please discharge water in drain pipe for 1-2 minutes to ensure it is clean.

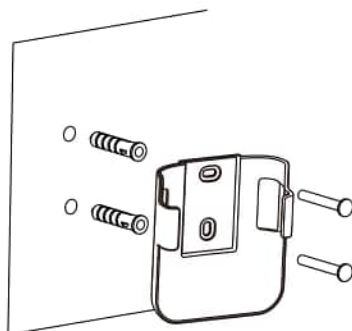
1. When the water supply valve is closed, remove the old angle valve, replace it with the angle valve configured by the machine, and use the new hose assembly attached to the product, the old hose assembly cannot be reused.
2. Connect the hose assembly inside the toilet to the angle valve.
3. After the machine is installed, open the angle valve and check that there is no water leakage at A/B/C/D.
4. After checking, plug in the power supply and press the "manual flushing" button to confirm the sewage siphon does work.



4. Finish installation and turn the power on

Remote Control Installation

Installation Method



1. Determine the screw position.
2. Put the expansion nut in place.
3. Tear off the sticker on the back of the remote control holder, and stick it on the wall at a suitable position.
4. Put the screws on.



Insert the remote control into the mount.



Finish

Trial Run

First time connect water and power supply:

Open the water supply angle valve to turn on the power, when soft lighting and display on the water temperature flash, it means the heating water tank is feeding water. Waiting for about 30 seconds after soft lighting and the water temperature on display stops flashing, it means the heating water tank has been full of water. At this time, try to operate the toilet as follows.

1. Seating Sensor

The picture shown is the seating sensor area. Only when the system senses someone is seated, the function can be on. Then, the buzzer will "beep" once, indicating it has been sensed and the system can be activated. When the human body leaves the sensor place, the buzzer will also "beep" once.



2. Check Fundamental Functions

When the human body sits on the sensor, the buzzer beeps. Press the "REAR WASH" or "FRONT WASH" button on the side control panel to operate.

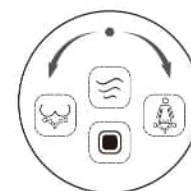


3. Check the Drying Function

When the human body sits on the sensor, the buzzer beeps. Press the "Drying" button on the side control panel to operate.



Side Control Panel Instruction



In the state of leaving the seat, long press the knob or the [Stop/Power] button on the remote control for more than 3 seconds to enter the standby mode;
In standby mode, short press the knob or the [Stop/Power] key on the remote control to exit standby mode;
In the cleaning mode, short press the knob or the [Stop/Power] key on the remote control to exit the cleaning mode.

Note: In the process of rear wash or front wash, turn clockwise, the washing position will increase by 1; turn counter-clockwise, and the washing position will decrease by 1. Long press the knob for 3 seconds to start or stop reciprocating cleaning.



Rear Wash

When seated without starting the washing function, turn the knob counterclockwise to start the rear wash.



Air Drying

When seated, long press the knob for 3 seconds to enter the drying mode. During the drying process, rotate clockwise to increase the air temperature by 1 level; rotate counterclockwise to decrease the air temperature by 1 level.



Front Wash

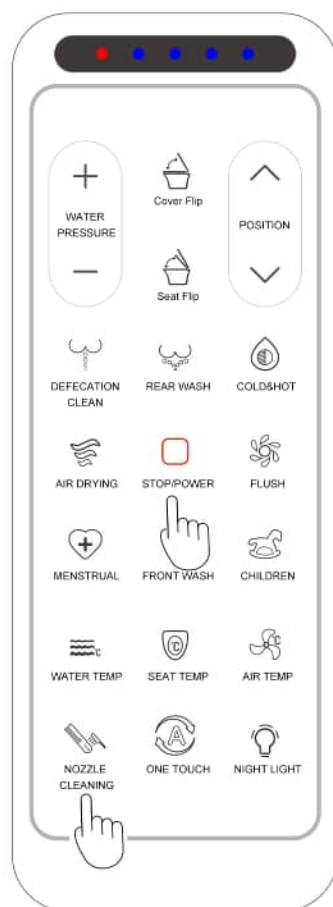
When seated without starting the washing function, turn the knob clockwise to start the front wash.



Short press the side flush button to flush when the power is off.



Remote Control Instruction



Remote Control Pairing Steps

1. Please turn off the power first, long press "NOZZLE CLEANING" and "STOP/POWER" button at the same time for 2 seconds, the 4 gear indicator lights are all on and flashing, at this time the main unit is powered on, and the pairing is completed.
2. After the pairing is completed, the two indicators on the far right of the gear position indicator (the 3rd and 4th gear indicators) indicate that the pairing is successful. Press any key on the remote control to return to normal after matching. It also will back to normal after 15 seconds even if the pairing hasn't been done.

Usage Instruction

1. Main Functions

- Rear Wash**
Short Press: Start rear wash. Double press: Turn on/off moving wash.
- Front Wash**
Short Press: Start front wash. Double press: Turn on/off moving wash.
- Air Drying**
Short Press: Start air drying.
- Stop Running Work**
Short Press: Exit running washing or drying. Long press: Turn on/off the power.


2. Adjustment Parameters


- Adjust water pressure**
Short Press "+": Water pressure level+1; Short Press "-": Water pressure level-1
- Adjust nozzle pipe position**
Short Press "↗": Front and rear gears+1; Short Press "↘": Front and rear gears-1
- Adjust seat temperature**
Short Press: Cyclically adjust seat temperature.
4 levels seat temp: 1st level: normal; 2nd level: about 34°C; 3rd level: about 37°C; 4th level: about 40°C.
- Adjust water temperature**
Short Press: Cyclically adjust water temperature.
4 levels seat temp: 1st level: normal; 2nd level: about 34°C; 3rd level: about 37°C; 4th level: about 40°C.
- Adjust air drying temperature**
Short Press: Cyclically adjust air drying temperature.
4 levels seat temp: 1st level: normal; 2nd level: about 37°C; 3rd level: about 45°C; 4th level: about 50°C.

3. Accessibility

- One button finish rear wash, flush and air drying**
Short press: Start automatic mode
- Clean water jets are injected into the end of the anorectum to help defecation**
Short press: Start automatic mode
- Customize suitable parameters for children, clean the rear**
Short press: Start children mode


Usage Method

 **COLD&HOT**
Alternate hot and cold massage water flow for massage and rinse
Short press: Start cold&hot mode
Double press: Turn on/off moving wash

 **MENSTRUAL**
Cleanse the genitals with customized parameters of a woman's menstrual cycle
Short press: Start menstrual mode
Double press: Turn on/off moving wash

 **NOZZLE CLEANING**
When not seated, extend the nozzle for daily cleaning
Short press: Start nozzle cleaning mode

 **NIGHT LIGHT**
Soft lighting at night
Short press: Turn on/off night light mode
Long press: Enter/exit energy saving mode

 **FLUSH**
The toilet is flushed
Short press: The toilet is flushed, and the flushing is invalid during the cleaning process

 **Seat Flip**
Short press to perform seat flip/close.

 **Cover Flip**
Short press to perform cover flip/close.


4. Other Function

Energy Saving Mode

After leaving the seat, the heating power of the seat ring is intelligently adjusted.

Automatic Sensing Function

 **Seat Flip**
Microwave Sensing Flip Lid
When unseated:
a. When the cover is closed, an object that enters the microwave sensing area will trigger the cover flip automatically.
b. After the person leaves the seat, if there is no object activity in the microwave induction area for 5 minutes, the system will automatically close the cover. If the seat ring is open at this time, the system will automatically close the seat ring and the cover.

 **Seat Flip**
Foot Sensing
In the state of leaving the seat, when the foot sensor signal is triggered for the first time, the seat ring flip will be performed first, and the second trigger will perform flush once. When seated, the foot-sensing flush is invalid.

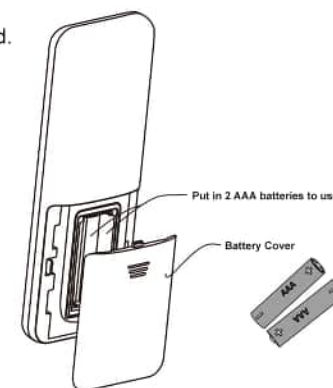
Remote Control Battery Replacement

When the battery runs out, the remote control maybe insensitive or out of control occasionally. Please replace the alkaline batteries immediately.

Note

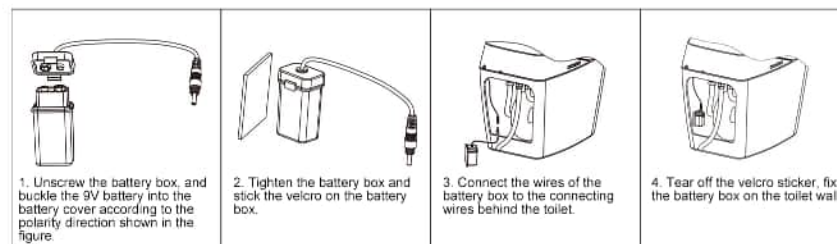
The polarity of battery must be put in the right position and the compression spring extends from the negative pole.

- New and old batteries should not be mixed.
- Please use alkaline batteries.



Note: Remote control with batteries. Please appropriately store it in a location that is out of reach of young children.

Backup Battery Replacement



Usage Instruction

Water Amount And Temperature

Due to the storage water heating mode, the water temperature will not decrease when cleaning for a long time. Although the water temperature may fluctuates, it doesn't effect the normal use.

Cleaning water will be controlled according to original setting temperature.

Normal: spouting water without heat.

Low: about 33°C

Medium: about 37°C

High: about 40°C

Heating time depends on external water inlet temperature.



Installation with the Seat Sensor

When you are not seated and accidentally press the button, the spout will not operate due to the seat sensor. All cleaning functions will not be set when not seated.



The Seat Sensor

The seat sensor will not work if the following conditions occur:

✗ The human body does not sit on the seat ring.

Environment usage instruction:

It is recommended that there should be no obstacle within 1.5m of the toilet, otherwise it will cause the flip lid to make wrong instructions.

Fault Judgement And Maintenance

Fault Judgement And Maintenance

Symptom		Inspection Method	Countermeasure
Does not start at all		Whether the sensing area of the seat ring is covered by cloth covers, cushions, etc	Please remove cloth covers, cushions, etc
		Whether there is a power outage	Please wait for the power to be restored
		Whether the socket is loose or poor contact	Please plug it in and keep it powered
		Whether the power reset button is pressed	Please press the power button of the toilet
Wash	Wash without water	Whether to cut off the water	Please wait until the water supply is restored
		Whether the water inlet angle valve is blocked by dirt	Please open the water inlet valve
		Whether the filter is blocked by dirt	Please clean the filter
		Whether the water supply pipe is twisted and blocked	Eliminate water supply pipe twists and turns
	The strength of the washing water is not enough	Whether the water potential is set to low	Please refer to the remote control functions to adjust the water pressure
		Whether the filter is blocked by dirt	Please clean the filter
		Whether the cleaning spout is blocked	Please clean the nozzle
	water temperature is not enough	Whether the water temperature is set at low level or normal	Please refer to the remote control functions to adjust the water temperature
	Stop water during washing	Press rear wash or front wash button and it will last for 60 seconds then stop	Please press rear wash or front wash button again
Seat Ring	The temperature of the seat ring is not high enough	Whether the strength of the heat preservation seat is set to low or off	Please refer to the remote control functions to adjust the seat temperature
		Whether it is in energy saving mode	Please exit energy saving mode
		Whether there is a power failure	Please wait for the power to be restored

When the product is left unused for a long time

- Especially in winter when no one at home for a long time, please drain out the water inside the tank and the pipe to prevent freezing

To Discharge Water

1. Drain out the water inside tank.
 - Activate flushing, and then turn off angle valve to prevent water inlet. Drain out the water inside the heating tank and the pipe.
 2. Unplug and cut off the electricity.
 3. Unscrew the hose connector off angle valve, drain the water in the pipe and reinstall.
 4. Handle the remaining water in ceramic body.
- It is suggested to put some antifreeze into water inside the ceramic body.

Tips: Make sure to turn on water angle valve and power supply when you use the toilet again.



Note: Before water discharging, the power must be cut off!



Daily Maintenance

Main unit care and maintenance

1. Wipe the surface with a sponge or soft damp cloth or neutral detergent cloth.
2. **Note:** Do not use thinners, light gasoline, detergents, chemicals, etc. to wipe. Do not spray insecticides, aromatics, deodorants, etc.

Note: The material of the product is new plastic material, which is not discolored. Most of the discoloration phenomenon is oxidation reaction. Product contact with perfume, toilet cleaner, nail polish and other liquids, if not wiped off in time will cause product surface oxidation.

Some users may place a seat cushion on the seat ring with a heating function. Generally, the cushion and the contact surface of the seat are non-slip rubber, once heated, it is easy to cause the seat in contact with the location to discolor.

Manual Nozzle Cleaning

1. Turn on the power and be unseated.
2. Press the "NOZZLE CLEANING" button on the remote control and start manual clean nozzles. (Cannot turn on nozzle cleaning mode when seated)
3. Use a soft brush or soft cloth when cleaning.
4. After the cleaning is completed, press the stop button or be in the seated state, and the cleaning tube will retract automatically.

Note: Do not forcefully pull out or push in the cleaning pipe during cleaning, otherwise it may cause machine failure.

Maintenance of filter net

When the water supply valve is closed, cut off the water source of the machine, the operation is as follows:

1. Turn clockwise to close the water inlet valve.
2. Use a coin or a flat-head screwdriver to loosen the filter.
3. Take out the filter, clean it with a toothbrush or other tools and put it into the fuselage.
4. Turn counterclockwise to open the water inlet valve.



Schematic diagram of the cleaning method for the appearance of the smart toilet

1. Use a soft sponge cloth or a sponge dipped in a neutral detergent to clean the toilet.
2. After cleaning, wipe the whole with a cotton cloth.



Smart toilet management method in winter

In order to prevent freezing in winter, please manage according to the following methods:

1. Confirm that the power plug is correctly inserted into the socket.
2. When there is no heating device inside the bathroom, please wrap the connecting pipe with cloth or use other insulation materials for insulation

Note: Please tighten the filter tightly, otherwise it may cause water leakage; do not hold the filter too hard, otherwise it may deform or break it; when there is dirt blocking the filter, it may cause insufficient flushing water pressure, please wait three months Clean it regularly within a period of time; it is recommended that you do not use detergent when cleaning, just wash it with tap water.

Technical Support

Name	Smart Toilet	
Power	AC110V -120V 60HZ	
Rated Power	1100W(15°C±1°C inlet water)	
Power Cord Length	1.2m	
Water Supply Method	Water channel direct connection	
Environment Temperature	3°C-40°C	
Inlet Water Temperature	3°C-35°C	
Inlet Water Pressure	0.14MPa-0.8MPa	
Safety Equipment	Leakage protector, The cover temperature sensor, Water overpressure protection device	
Cleaning Device	Heating	Instant heat
	Warm Water Temperature	4 stages (normal-40°C)
	Spray Water Amount	Rear Wash About 0.5-0.8L/min
		Front Wash About 0.5-0.8L/min
	Heating Power	1100W
	Safety Equipment	Temperature sensor, Temperature fuse, Temperature jumper, Flow meter
Drying Device	Wind Speed	>4m/s
	Wind Temperature	4 stages (normal-50°C)
	Heating Power	200W
	Safety Equipment	Bi-metal switch, Temperature fuse
Deodorization Device	Method	Activated charcoal
	Heating Power	1.5W
Seat Heating Device	Seat Temperature	4 stages (normal-40°C)
	Heating Power	45W
	Safety Equipment	Temperature sensor, Thermal fuse
	Open and Close Device	Damp Down

Rated power: Under the conditions of ambient temperature 20°C±5°C, inlet water static pressure 0.18MPa±0.02 Mpa, and inlet water temperature 15°C±1°C, the average power for a cleaning cycle when the cleaning function is turned on and continues to work stably.

List of Materials

Main Unit



A Smart Toilet



A set Of Remote Control Components
(including remote control, Bracket, self-tapping screws,
expansion screw plugs)



A Wax Ring



An Installation Manual



American Adapter + Angle Valve + Throttle