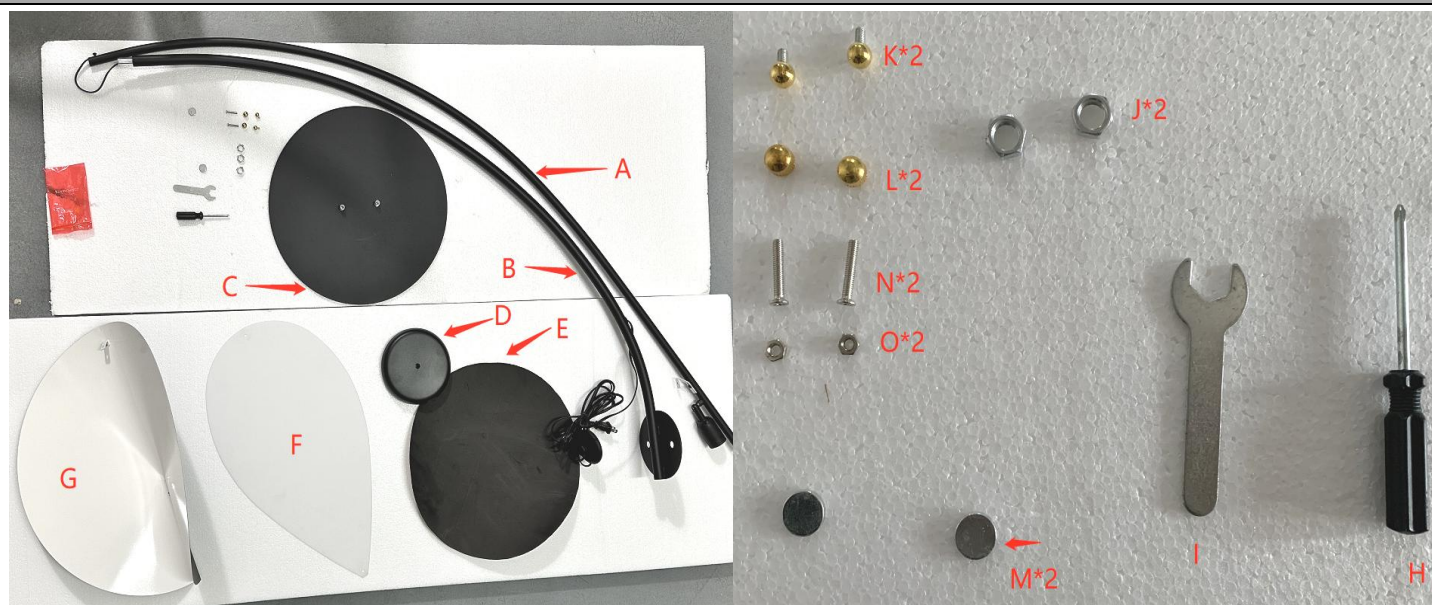


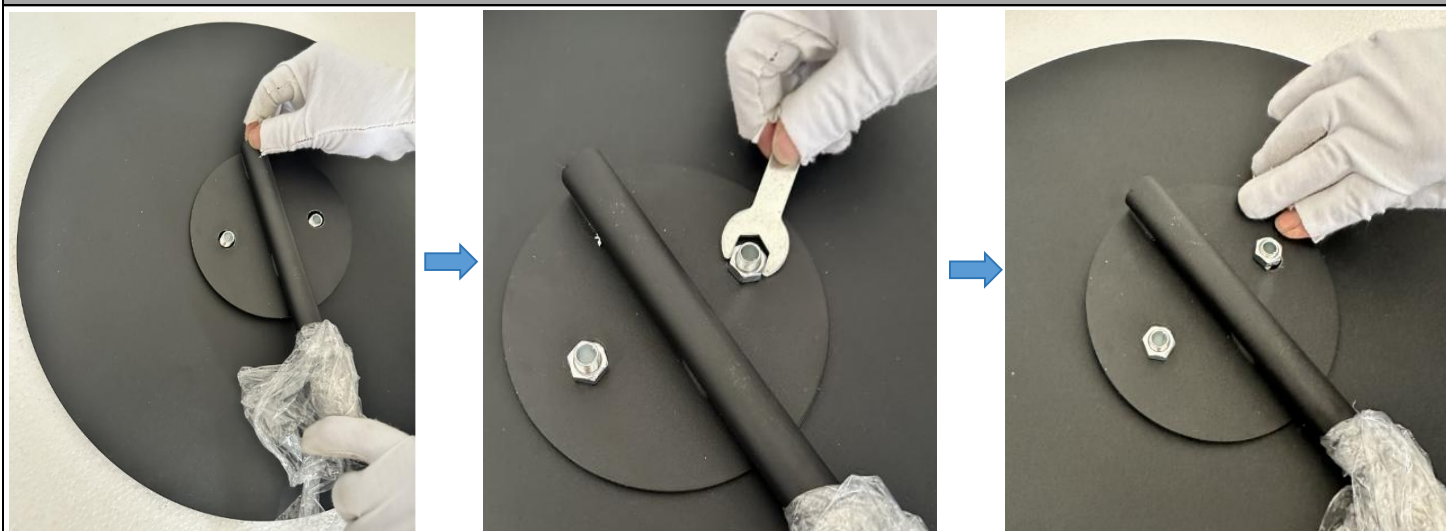
Installation Guide

Picture 1



Check products and accessories: A*1; B*1; C*1; D*1; E*1, F*1, G*1, H*1, I*1, J*2, K*2, L*2 (pre-assembly), M*2, N*2 (pre-assembly), O*2, installation time: 30min, installation number: 1, installation difficulty: 1

Picture 2



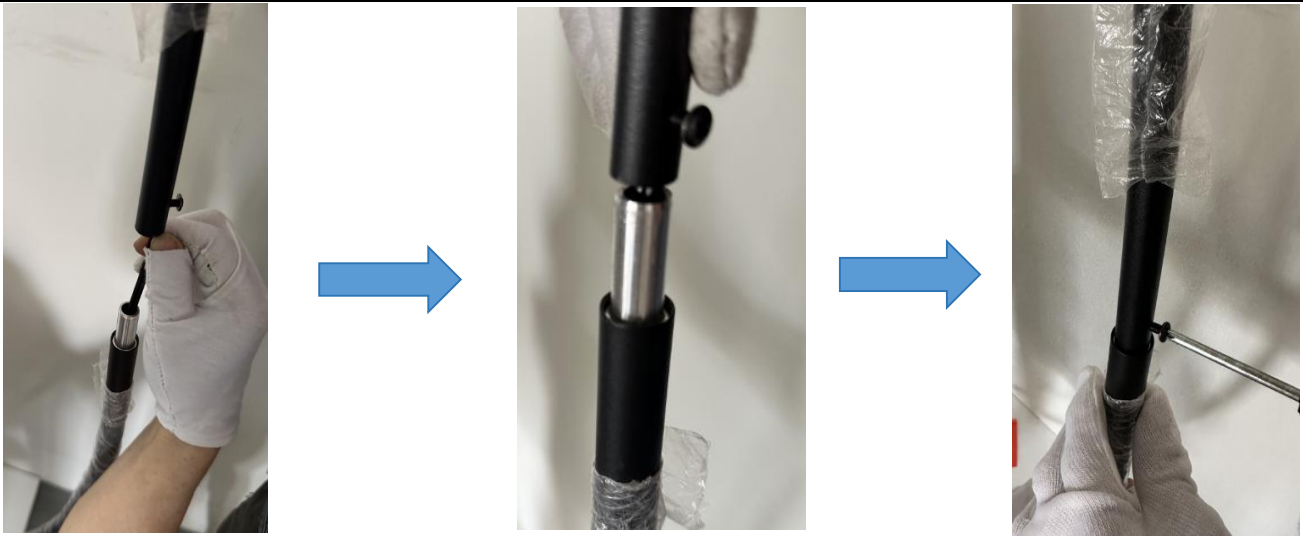
Step 1: As shown in the picture, secure B to C using nut (J).

Picture 3



Step 2: Put magnet (M) on the end of the tube (B), and then put disk (D) according to the hole.

Picture 4



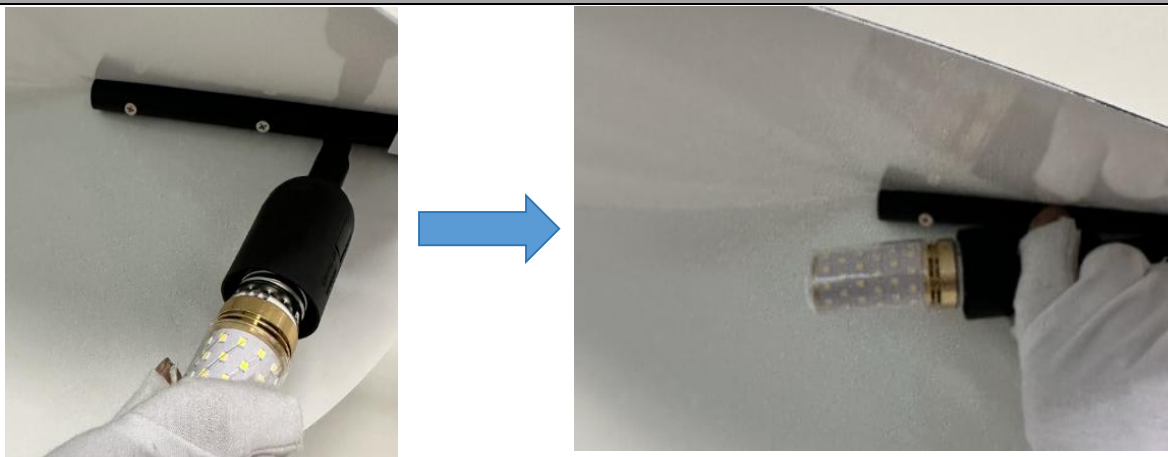
Step 3: Put the wire through tube A, until tube A and tube B are docked, and then lock it with screws.

Picture 5



Step 4: Remove the screws L and N from tube A, align G with the hole on tube A, and then secure with the screws (L and N).

Picture 6



Step 5: As shown in the picture install the bulb (not provided), adjust the direction of the light bulb, and test it.

Picture 7



Step 6: As shown in the picture, secure F to G using screws (K).

Picture 8



Installation Completed.