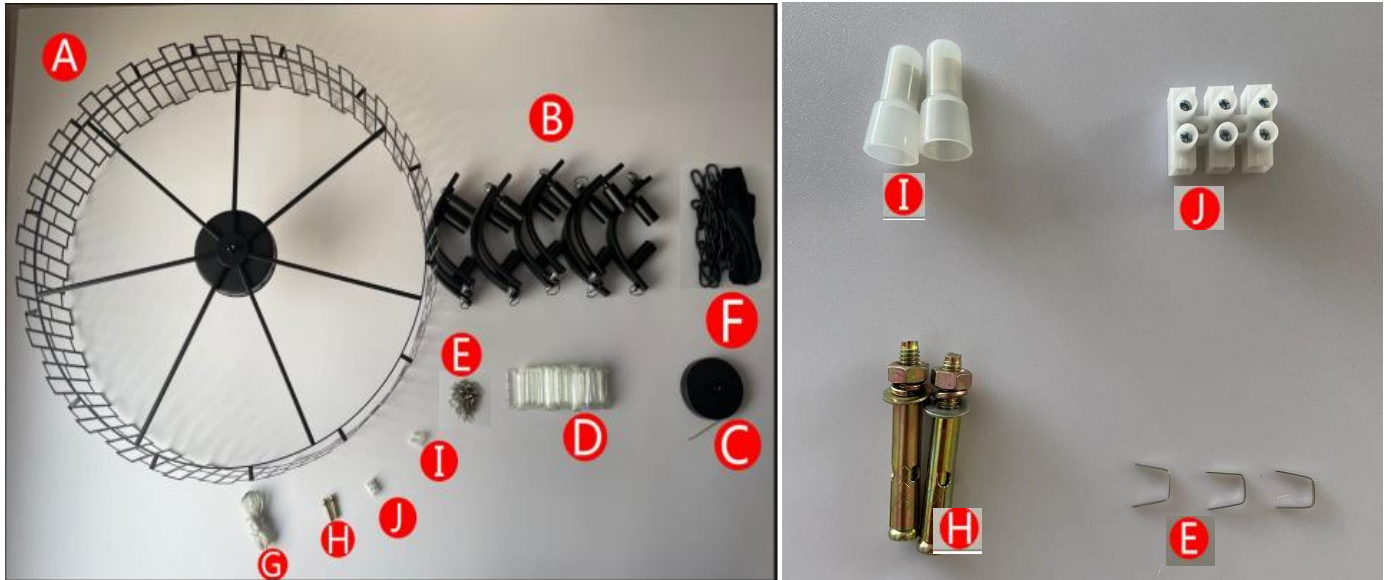


# Installation Guide

Picture 1



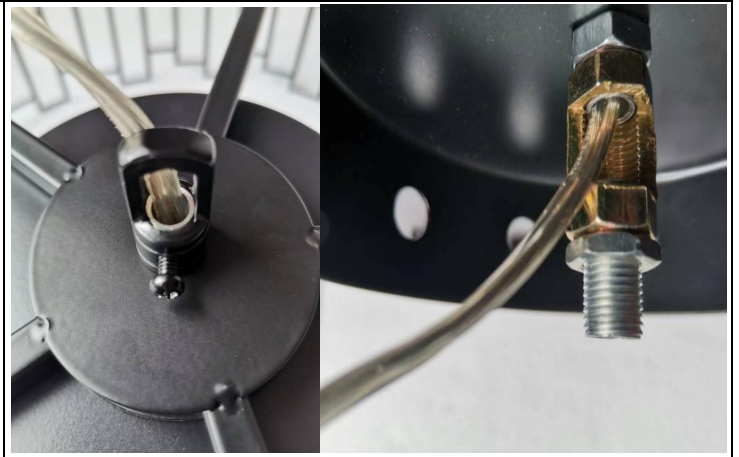
Parts list: A\*1;B\*14;C\*1;D76L\*162;E\*162;F\*1;G\*1;H\*2;I\*2;J\*1. The hanging plate and fixing screws of the lamp body are pre installed accessories that need to be removed; the installation time is 40 minutes, the installation difficulty is 2, and the number of installers is 2.

Picture 2



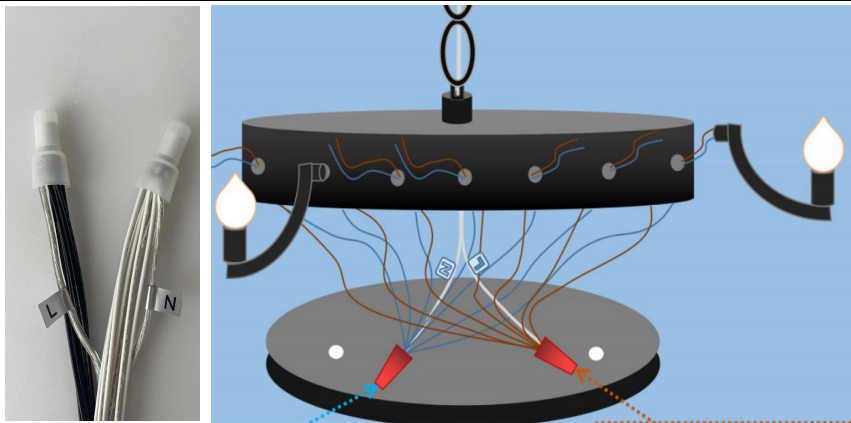
Step 1: Use a wrench to fix the B lamp arm \* 14 with a gasket and hexagonal nut inside the cluster body A. (Adjust spacing)

Picture 3



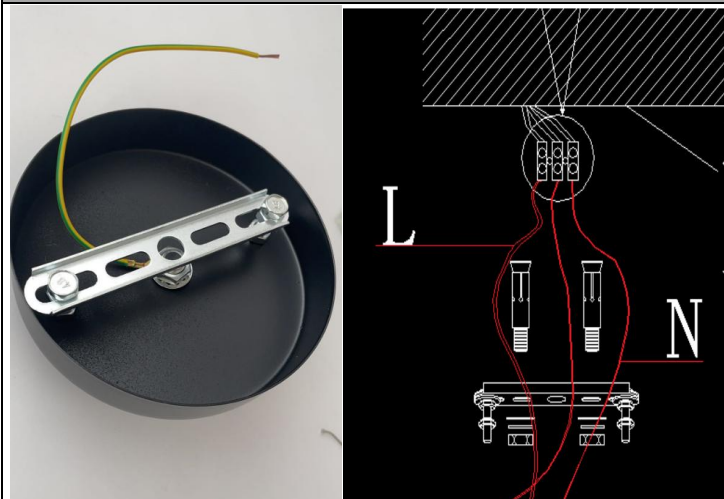
Step 2: Connect the main line of the G power supply to the inside of the body A.

Picture 4



Step 3: Connect the B \* 14 light arm wires inside the body to the power supply main line G in black corresponding to L and white corresponding to N, and then use the wiring cap I \* 2 for insulation.

Picture 5



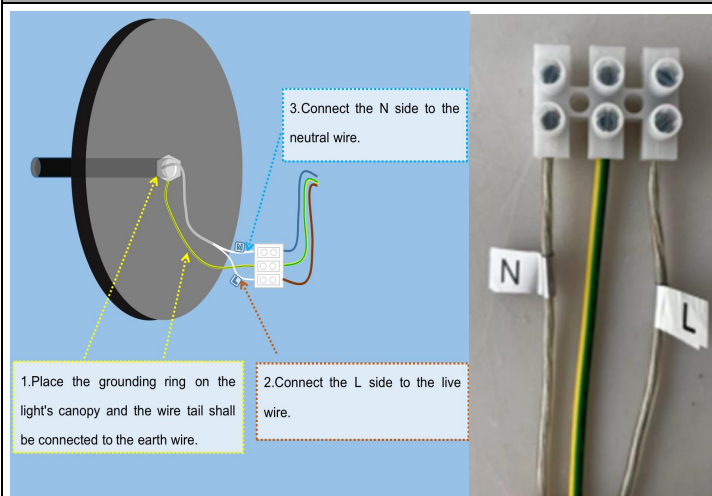
**Step 4:** Take out the hanging plate from the ceiling pan, mark the hole spacing on the ceiling, drill holes with an electric drill, and fix the hanging plate on the ceiling with Wall plug H \* 2.

Picture 6



**Step 5:** Adjust the length of the hanging chain according to the required height, then insert the F hanging chain and wire G into the flannel, and lock both ends of the hanging chain into the hanging ring on the lamp and the ceiling plate. Pay attention to locking the safety buckles at both ends.

Picture 7



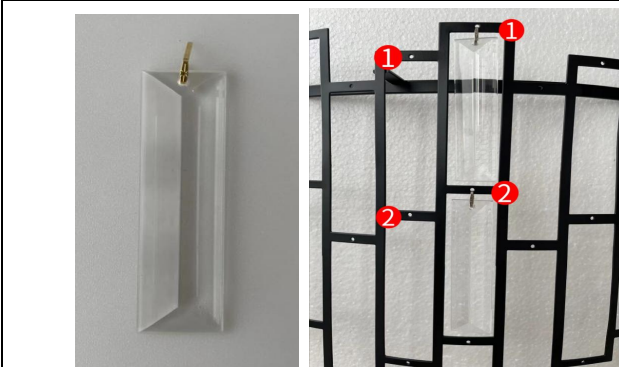
**Step 6:** Connect the wires as shown in the diagram.

Picture 8



**Step 7:** Use the removed screws to fix the ceiling panel to the hanging board, then install the light source (this product does not come with a light source and needs to be purchased by yourself), power on and test the light, and the lamp can work normally before proceeding to the next step.

Picture 9



**Step 8:** Use crystal needle E to hang D on the lamp holder. (Note: The crystal only needs to be installed in two layers, centered inside the metal frame. If defects are found in the crystal holes that cannot be installed, do not worry. The crystal has a spare quantity. If the crystal is still insufficient after installation, please contact customer service.)

Picture 10



Completion.